



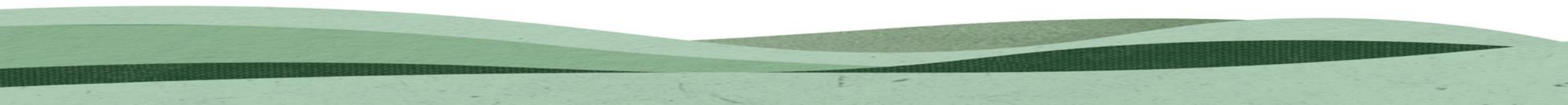
The Surrey Hills Partnership September 2022

- 1. Welcome Heather Kerswell, Independent Chair**
- 2. Presentations and questions to the Surrey Hills Family:**
 - Advocacy, Partnership and Coordination
 - Planning and the Boundary Project
 - Landscape, Nature Recovery & Enhancement
 - Access, Enjoyment and Understanding
 - Promoting Sustainable Business
 -
- 3. Partner Updates**
- 4. Partnership Tour 28th October**



The Surrey Hills Partnership September 2022

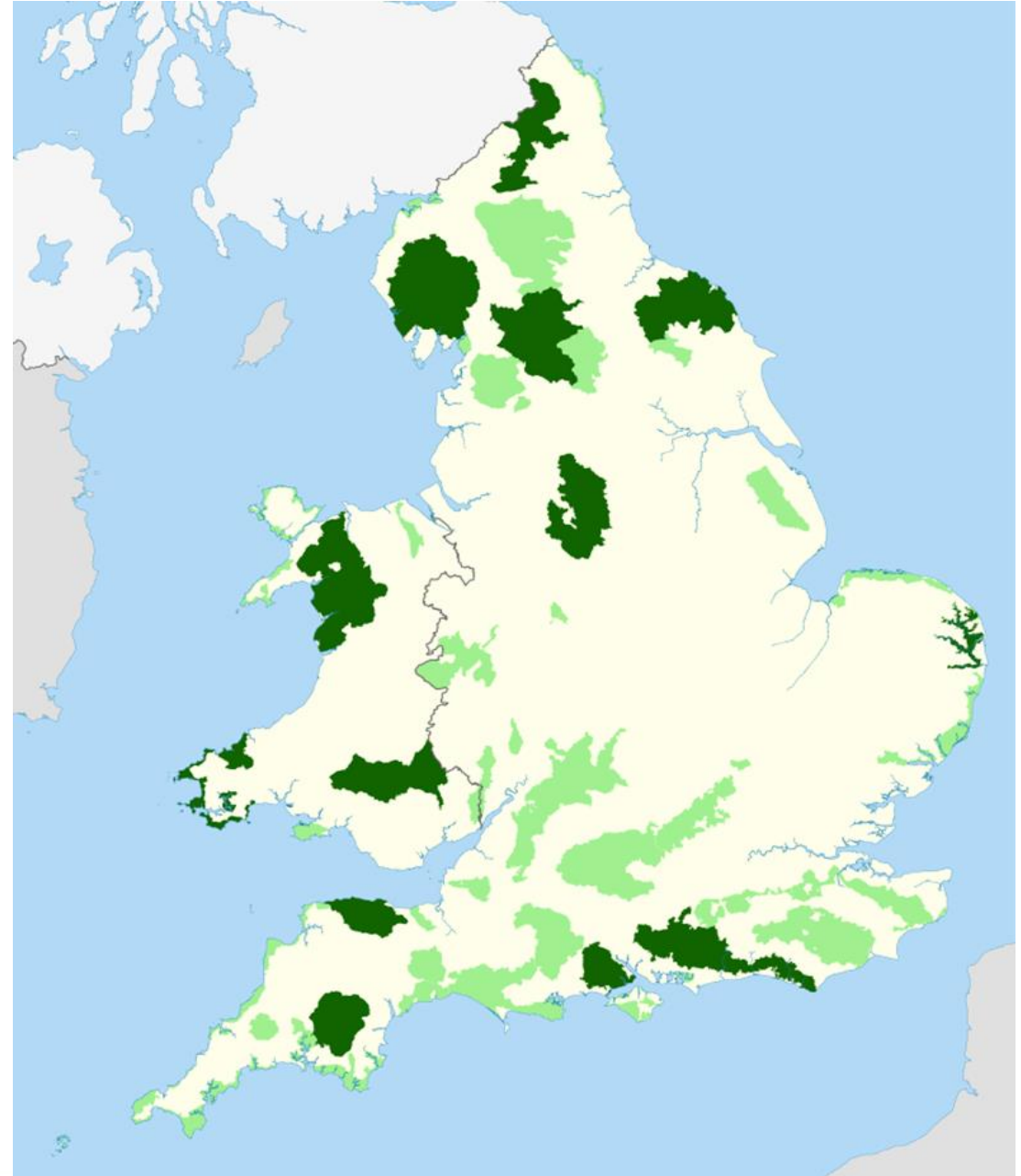
Advocacy, Partnership and Coordination





The Surrey Hills is:

- **One of 44 National Parks (10) and AONBs (34) in England**
- **Statutory duty to prepare and keep review Management Plan**
- **Surrey Hills AONB Board is a Joint Advisory Committee, supported by SCC**
- **75% of Core Funding comes from Defra, to support team**





The Surrey Hills Family and team

New starters since last September:

Sarah Thiele, Programme Manager (FiPL), SCC
Christa Emmett, Vol & Projects Coordinator, Society
Emma Cole, Comms Lead, SCC
Binal Patel, Finance Support (part time), SCC
Oliver Wild, Support Officer, SCC

Working Groups:

Equestrian
Mountain biking
Byways
Promoted Routes (Active Travel)





Surrey Hills AONB Management Plan 2020 - 2025

The 25 year Vision

The Surrey Hills is recognised as a national asset in which its natural and cultural resources are managed in an attractive landscape mosaic of farmland, woodland, heaths, downs and commons.

It provides opportunities for sustainable business enterprise and for all to enjoy and appreciate its natural beauty for their health and well-being.

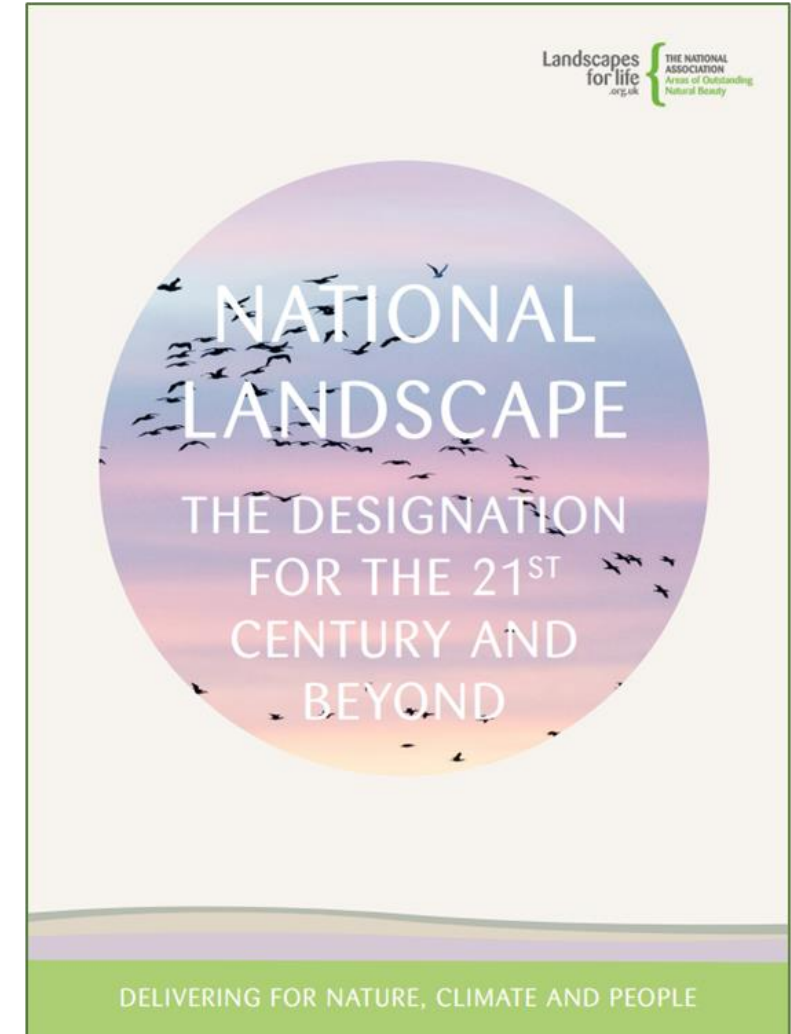


National Activity

- Defra's new Landscape, Parks and Trails Partnership
- National Landscape Prospectus. Defra to fund name change with £120k in 22/23
- Art in the Landscape Strategy: Arts Council for England MoU
- Defra Access Capital Funding - £7m in 2022 – 2025
- Heritage Lottery Fund Review – new fund for National Landscapes
- AONB visits – Surrey Hills in October
- Chairs' Conference and NAAONB AGM on 17 November

Defra Working Groups:

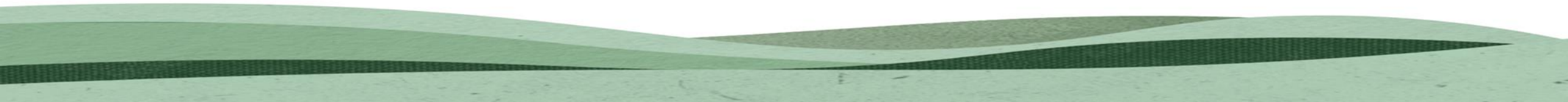
- Green financing
- Governance
- AONB Management Plans





The Surrey Hills Partnership September 2022

Planning and the Boundary Extension Project





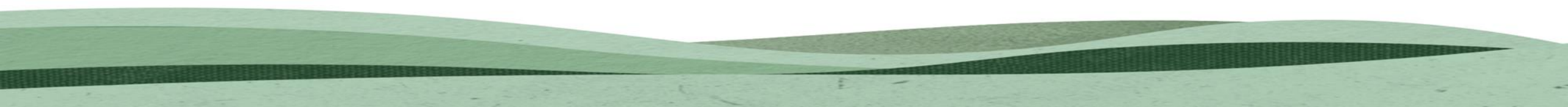
The Surrey Hills Partnership September 2022



**Clive Smith, Planning Adviser
Over 300 planning consultations per annum**

Key issues:

- Fragmentation, e.g Wanborough Fields**
- Energy, e.g gas drilling near Dunsfold**
- Dark skies, e.g Urnfield floodlighting, Merrow Downs**



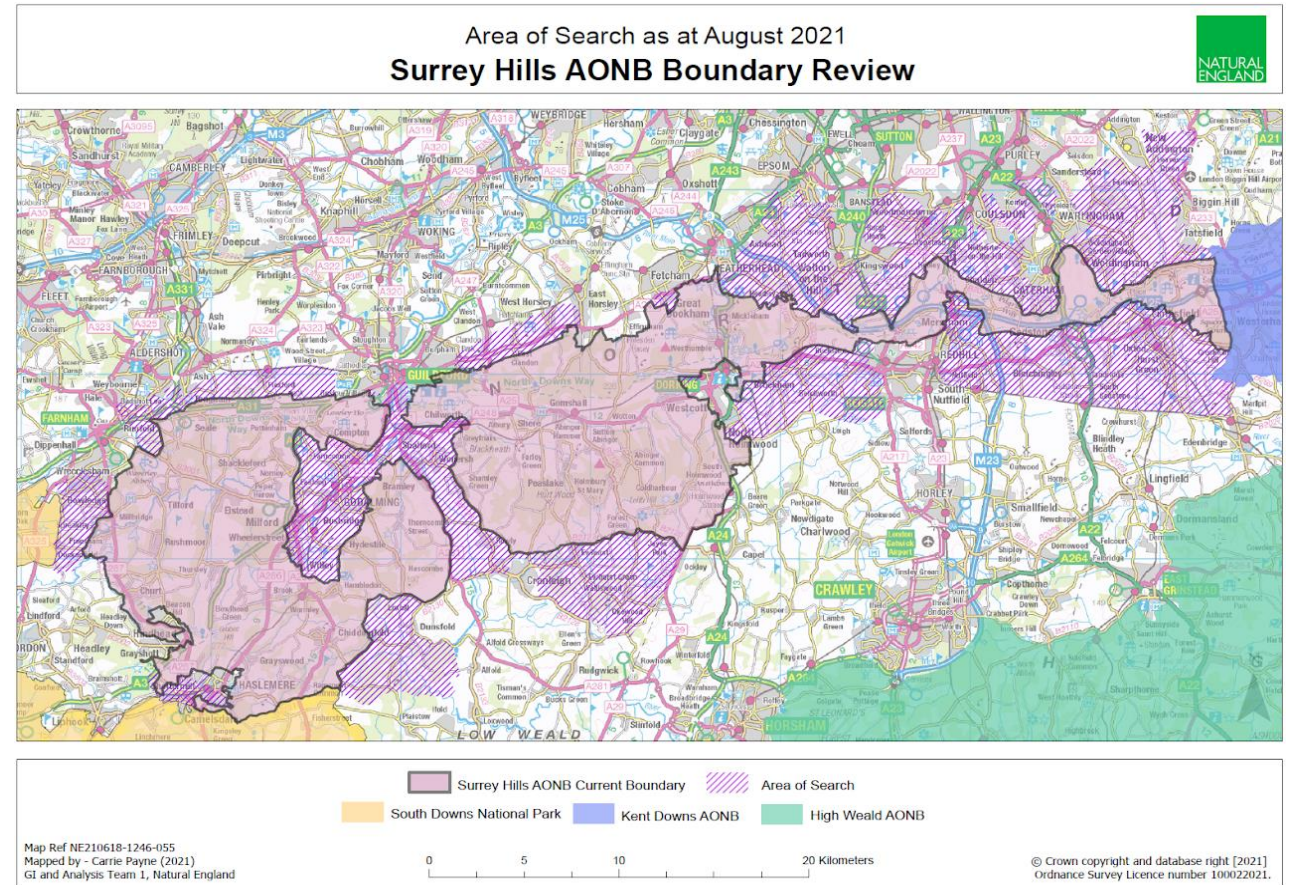


The Surrey Hills Partnership September 2022

**Boundary
Extension Project**

**Public Consultation
Early 2023**

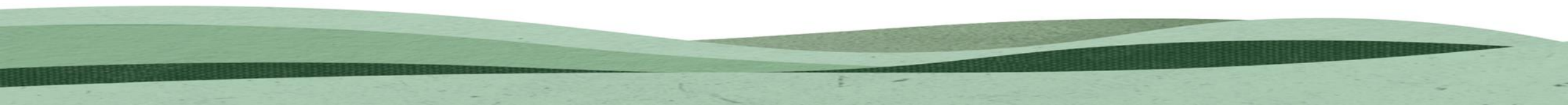
Decision 2024?





The Surrey Hills Partnership September 2022

Landscape, Nature Recovery & Enhancement





Farming in Protected Landscapes

**Agricultural Transition Funding
(from Basic Payments to ELMS)
2021 - 2024**

£53m shared between 44 National Landscapes

£1.2m for Surrey Hills

Local Assessment Panel

Team: Sarah Thiele, Programme Manager
Env Land Management Adviser
Binal Patel, Finance Support





Farming in Protected Landscapes



Department
for Environment
Food & Rural Affairs

People engage and inspire new audiences	Place promote the Surrey Hills as one of England's National Landscapes
Nature restore and enhance our key Surrey Hills species and habitats?	Climate restore or reduce carbon through regenerative farming

Up to 40% for commercial projects eg a diversification project such as a pop-up campsite

Up to 80% for projects with some commercial elements eg installing hand washing facilities to allow for hosting educational visits for which a payment is made

Up to 100% where there is no commercial gain eg projects to improve access or public engagement

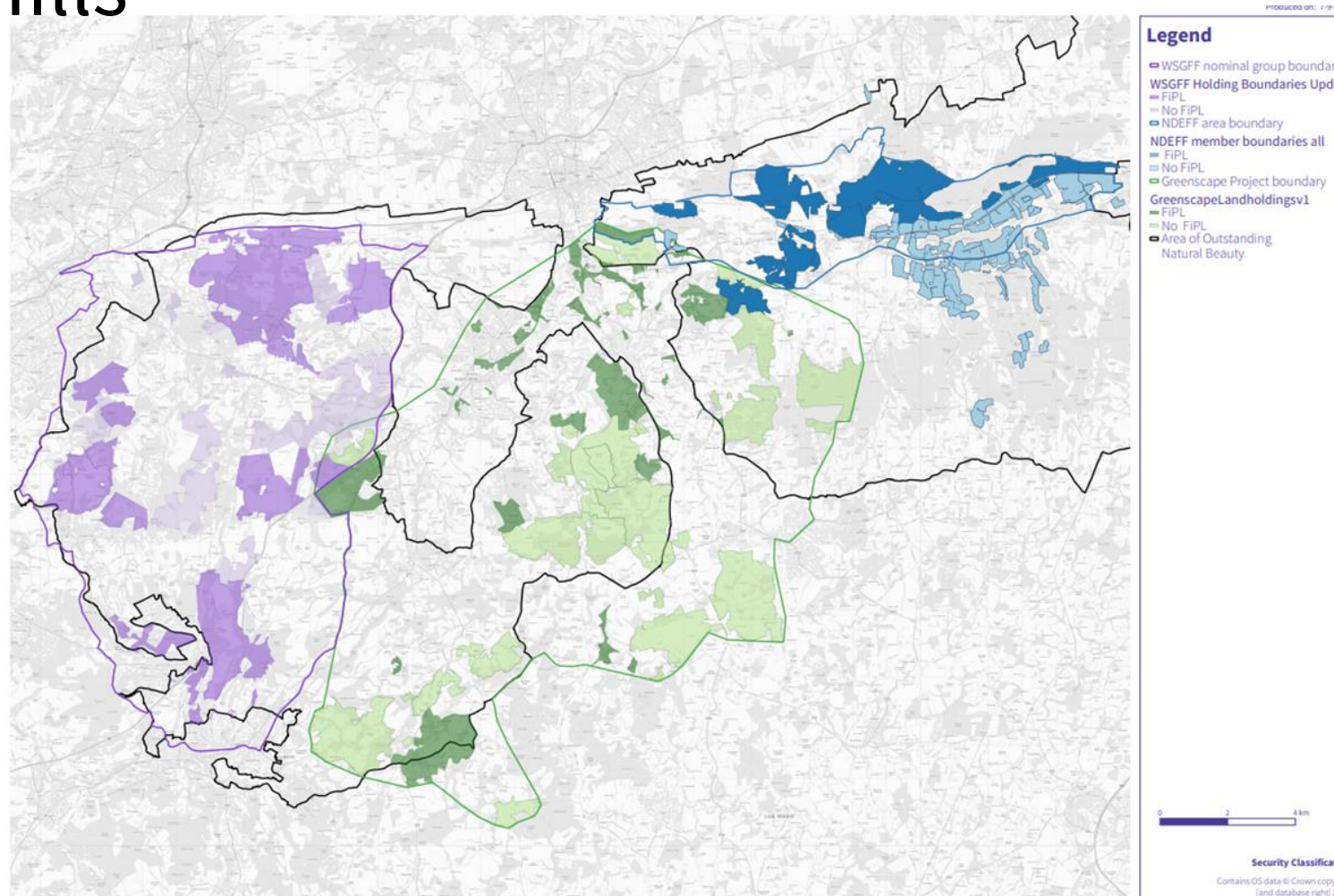
Where Countryside Stewardship rates already exist FiPL can only pay the same rates



The scheme is open to:

- farmers and land managers (including tenants)
- collaborative groups of land managers
- organisations and individuals delivering projects in collaboration with a farmer or land manager

Farm Clusters in the Surrey Hills





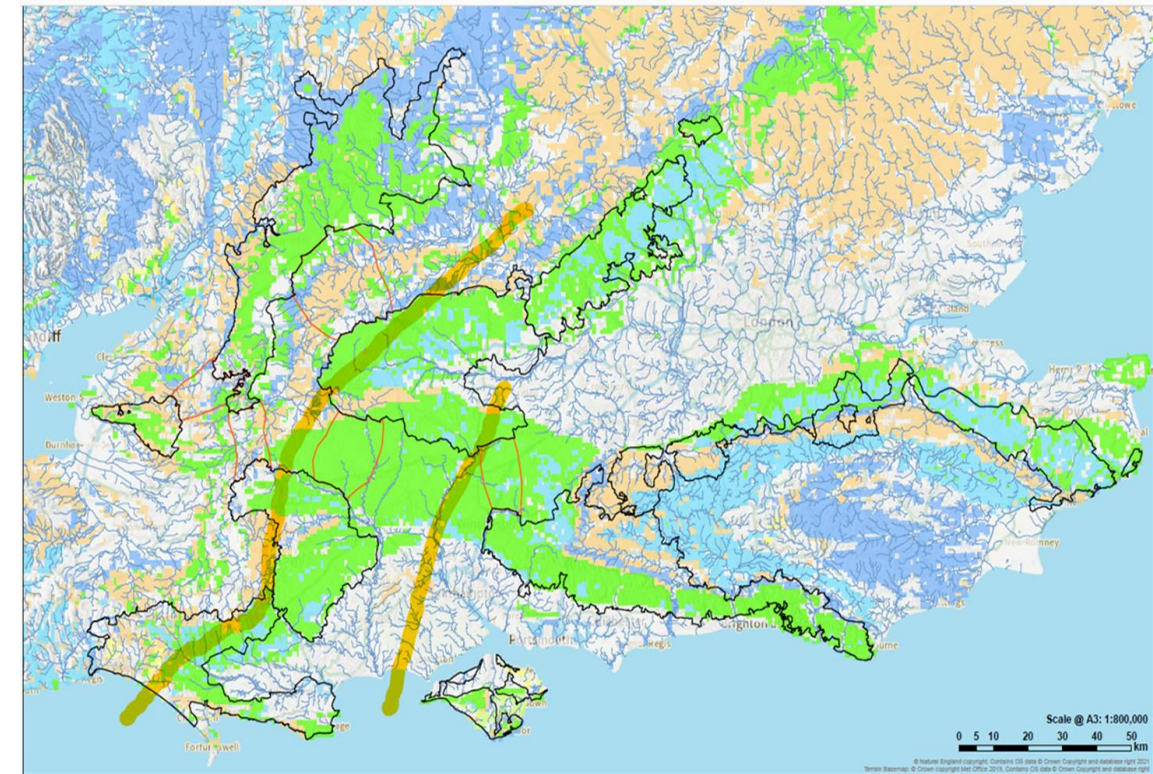


BIG CHALK

Restoring Our Chalk Landscapes across the Region's National Landscapes to connect people, nature and heritage.

Aims

- Restore and secure a chalk landscape mosaic of grassland, arable and woodland on a hitherto unimagined scale.
- Wildlife rich landscapes will help secure a future for people and nature in climate challenged times.
- Enable a deep engagement for local communities and visitors alike.



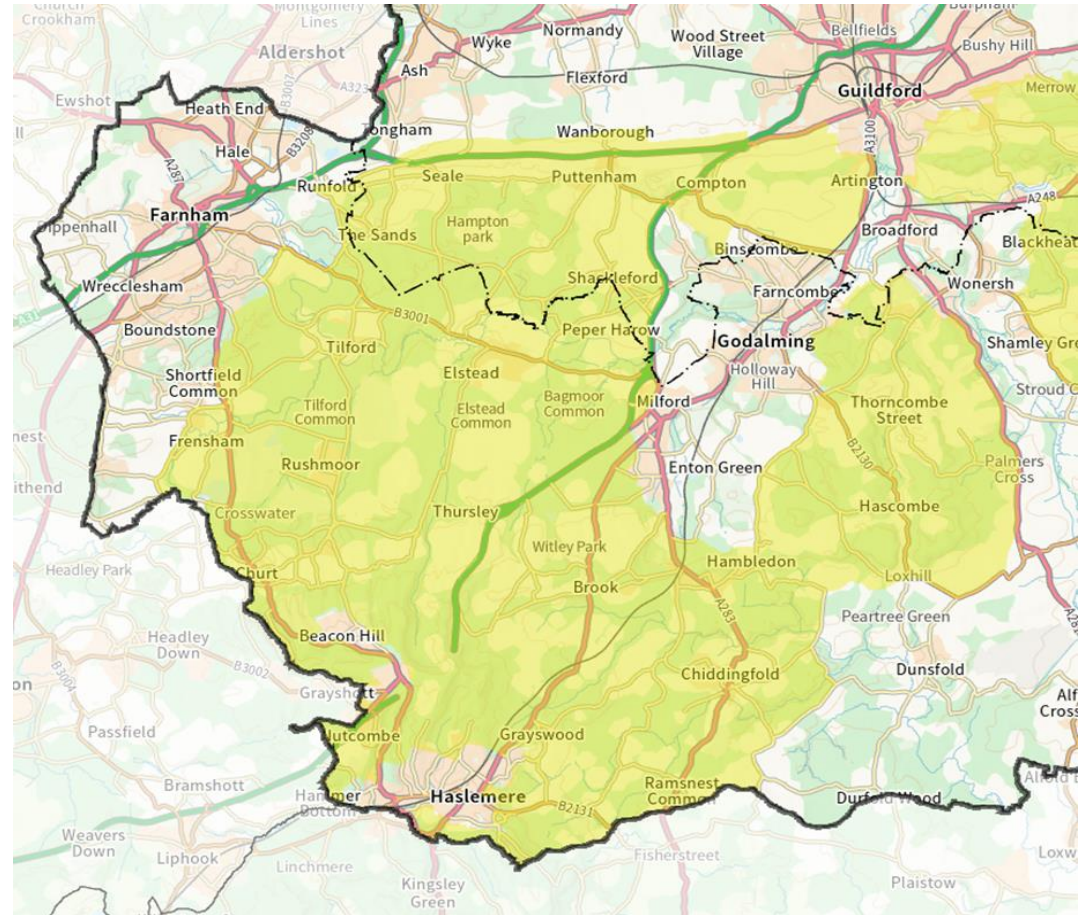


HEATHLAND CONNECTIONS

Regional Nature Recovery project based around Thursley NNR. £450k over 3 years

Aims:

- Enhance sites designated for nature conservation and other wildlife-rich places
- Improve the landscape's resilience to climate change,
- Reinforce the natural, geological and cultural diversity of our landscapes
- Enable us to enjoy and connect with





Surrey Hills Society activities



- A continuing and varied programme of enjoyable events including walks, talks and visits designed to broaden members' knowledge of the interesting – and often surprising - places in the Surrey Hills.
- Since it has been possible to register for membership through the website, enrolling a constant flow of new members.
- Attendance at shows to promote the Society
- Talks to groups about the AONB and the Society
- All this is achieved by a dedicated team of volunteers.







Achievements



Making Space for Nature Reception





Achievements



Hedge surveys and butterfly counts with National Highways



Achievements



National Autistic Society Event at
Clandon Wood



Achievements



First Surrey Hills Conservation Volunteers Training Course

- Focused on auditing self-guided trails for signage, condition and accessibility.
- Coordinating volunteers to audit at least 20 self-guided walks
- Working in partnership with Explore Surrey





Achievements



Surveys and conservation work





Achievements



- 9 walks led and guided by SHS from 1st September – 1st October.
- Finishing with GTCC sponsored walk along Greensand Way to Witley to raise funds for GTCC's Street Angels work.



Guildford Walkfest



Coming up...

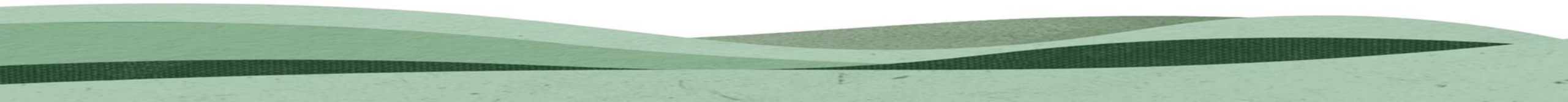
- More tree/hedge planting and Hedgerow Girlguiding Badge
- Surrey Hills Champions
- Activities with SMEF and GSP
- Future work with Surrey Choices
- Leatherhead Youth Project – 'Making Good'
- Lots more SHS events





The Surrey Hills Partnership September 2022

Access, Enjoyment and Understanding





OUR COUNTRYSIDE CODE CHAMPIONS









A partnership between Surrey Arts and Surrey Hills AONB dedicated to:

Inspiring new audiences

Delivering inclusive arts projects

Connecting people to landscape

Engaging with a diverse audience

Promoting digital engagement

Improving health & wellbeing

Encouraging positive environmental action

Developing local artists of all art forms



Heathland Artworks 29 June – 30 October 2022



Successful annual project working with RSPB and the University for the Creative Arts resulting in an arts trail throughout Summer through to the end of Farnham Craft Month in October.



This is the sixth year and the first where both RSPB and UCA have contributed financially.

The Future

We aim to secure this annual financial contribution to allow us to engage more people through guided walks and workshops.

With the recruitment of a 1 day per week support post for Surrey Hills Arts, this will give more capacity to coordinate these additional elements of the project.

Inspiring Views - Coccolith



This month work begins on 'Coccolith' the latest and ninth 'Inspiring Views' works that we have commissioned. Artist duo Instar are creating a piece from stone quarried on Titsey Estate embedding a chalk line and coccolith engravings into the seating. The artists are planting the stone wall with native wildflowers.

Inspiring Views projects also involve improving access, community engagement, a series of walks and conservation work.

This project is co-financed by the European Union.



Harvest

A community celebration of the landscape through the arts

Saturday 17 September, 6pm at Box Hill

Working in partnership with the National Trust and Mole Valley District Council. We aim to deliver a celebration of the landscape with diversity, nature and community at the heart.

This year the central art installation was made by hundreds of local people mainly from targeted groups such as Freewheelers, the Patchworking Garden, The Grange and SMEF.

Challenges:

This is a free event so funding is extremely limited.
The event would benefit from an Events Manager.

Potential:

To build new audiences
To be a totally inclusive event
To open up to other art forms



HABITAT- Community Eco Spaces

- Innovative design solutions to declining species
- Development of emerging artists in public art commissioning
- Engaging people of all abilities to make habitats using sustainable materials
- Enhanced urban areas for connecting to nature and community togetherness
- Deeper understanding of local endangered species, what they need and how the individual can support
- New partnerships between art and landscape organisations
- Important research and tool kits for future projects



Pilot Project and Potential

Arts Council England funded our pilot project on campus at the University of Surrey between January to June.

The resulting artworks were created by the artists with guidance from the Head of Landscaping & Horticulture from the University and the Learning Manager from Surrey Wildlife Trust.

The project has been evaluated and is now being monitored by the University to track changes to the wildlife in the space.

The challenge is to raise funding to roll the project out to urban areas across Surrey. The next step is to speak with potential partners.





- Over £90k investment in NDW in Surrey, including new Box Hills steps
- Surrey has third of trail and two thirds of users

		6 Month Mar - Aug	Monthly Ave	Annual Projection
Highest Ppl	Reigate	111,790	18,632	223,580
Highest Bike	Silent Pool	11,558	1,926	23,116

- 50 ambassadors now trained and delivering activity on/ along the NDW
- 15 Gateway Signs to bookend the start/ finish of each trail section to be installed
- Completed Feasibility Study to extend NDW to Winchester

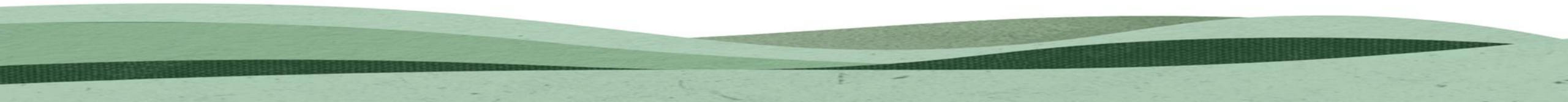




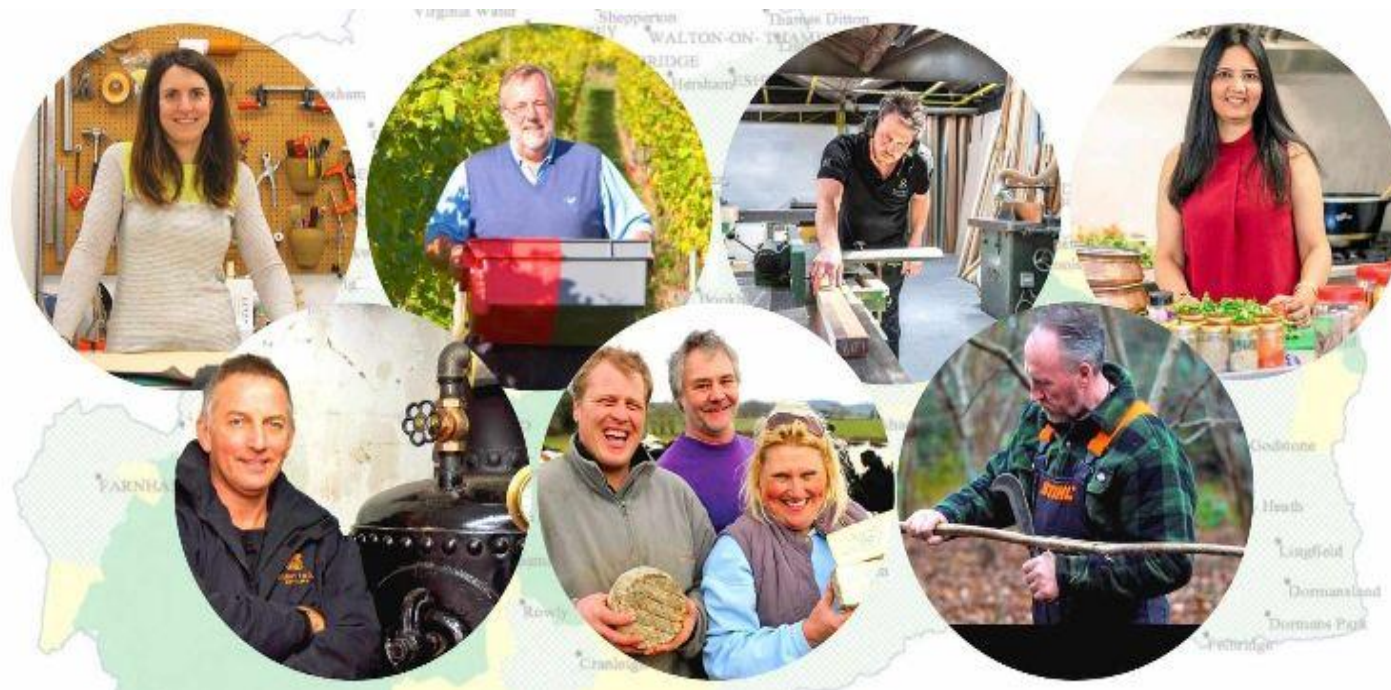
The Surrey Hills Partnership September 2022



Promoting Sustainable Business



ACHIEVEMENTS



A thriving sustainable rural economy for the Surrey Hills



**SURREY HILLS
WEBSITE**

**LEISURE & TOURISM
EXPERIENCES**

**CORPORATE
SUPPORT
NATURE RECOVERY**

**SUPPORTING
MEMBERS
SUSTAINABILITY**

**PROMOTING
SURREY HILLS
TO THE PUBLIC**

**SURREY HILLS
SUSTAINABLE
PRODUCE**
Cafes, hotels, pubs

**SURREY HILLS
FAMILY**



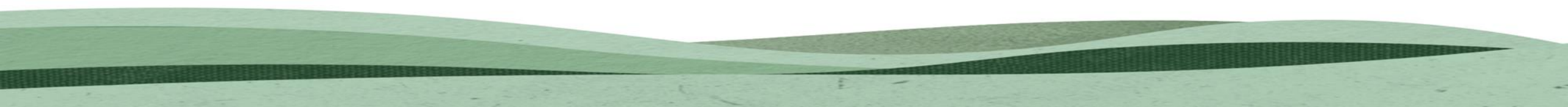
**PLANS &
OPPORTUNITIES**





The Surrey Hills Partnership September 2022

Partner Updates





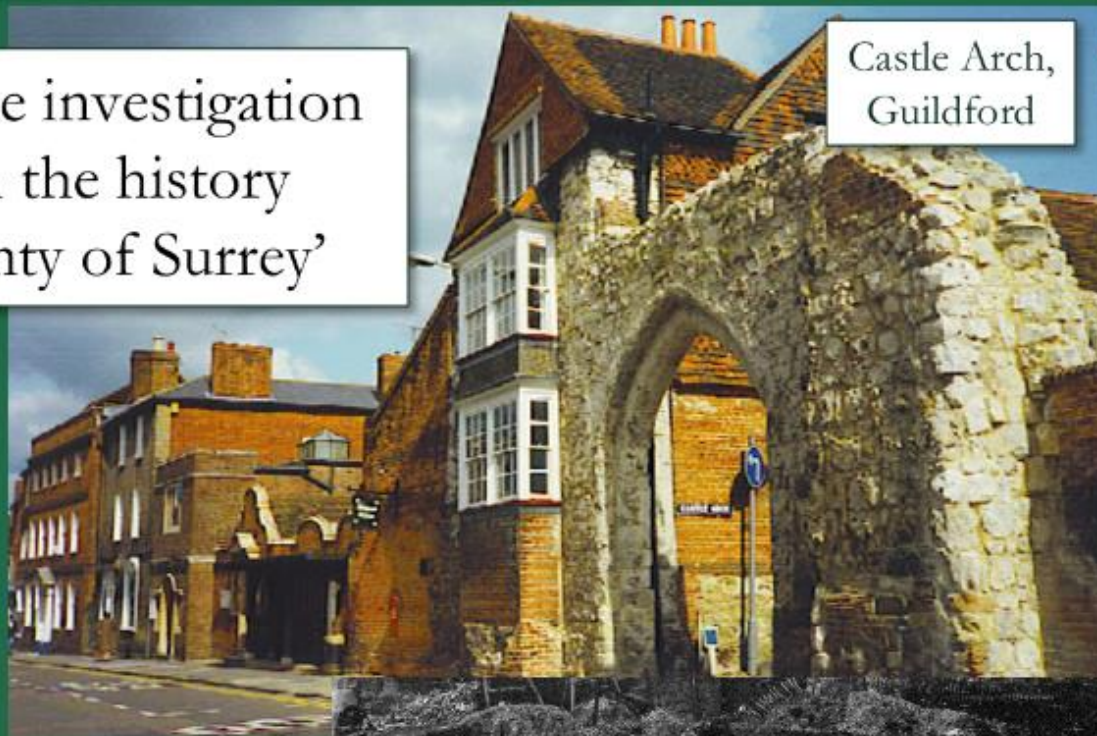
Surrey Archaeological Society

Dr Anne Sassin (Outreach Projects Manager)

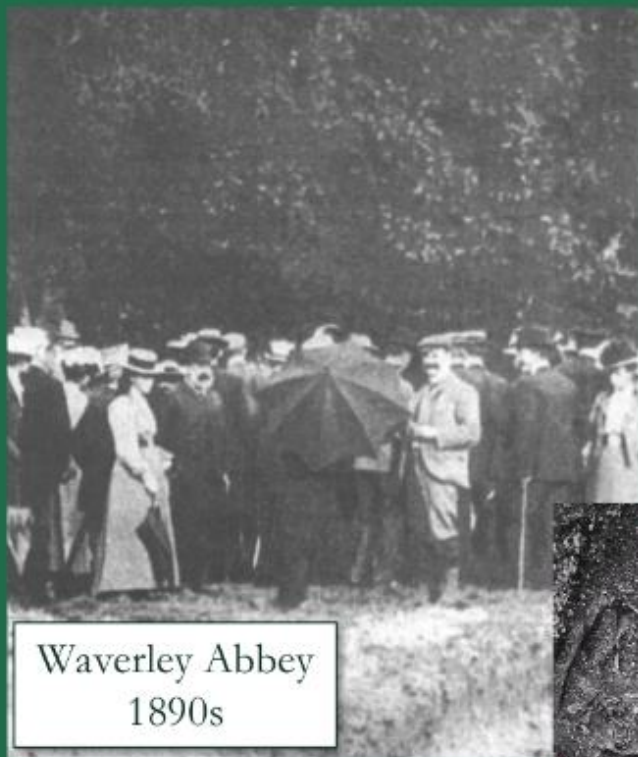


History of the Society

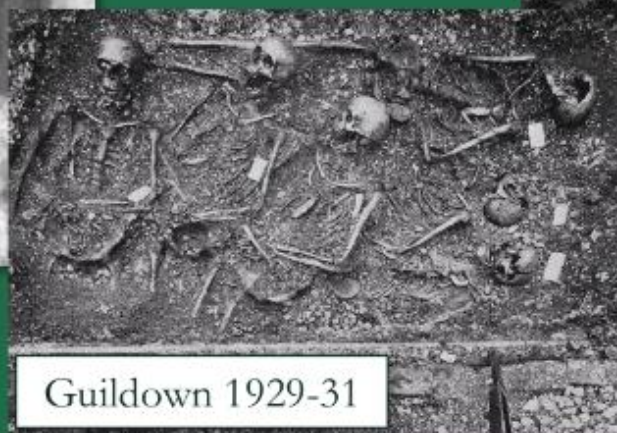
Established in 1854 'for the investigation of subjects connected with the history and antiquities of the County of Surrey'



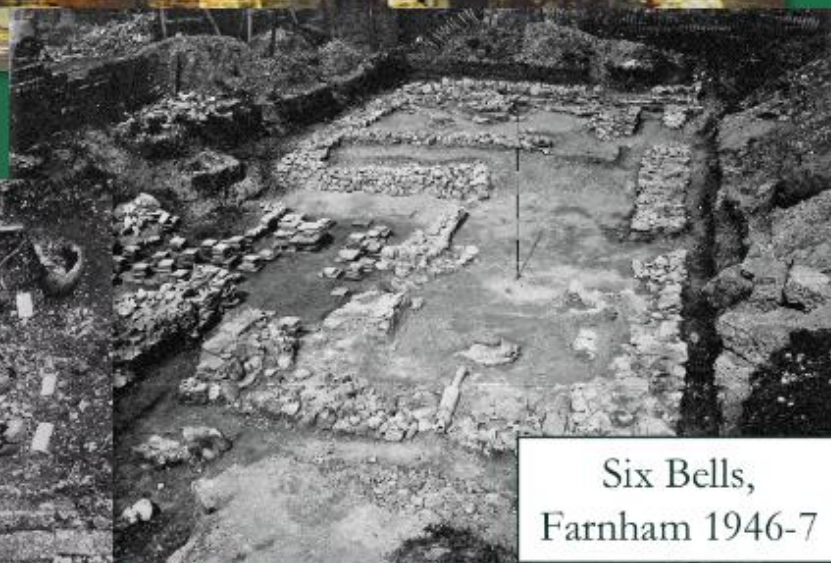
Castle Arch,
Guildford



Waverley Abbey
1890s



Guildown 1929-31



Six Bells,
Farnham 1946-7



Guildford
Blackfriars 1974

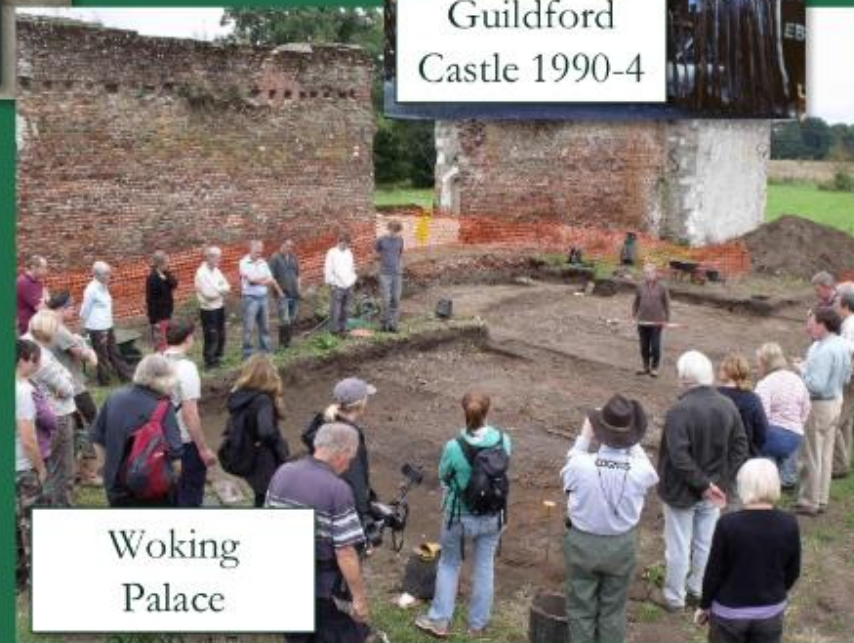
Recent fieldwork is a mixture of monitoring, research-led and community projects



Guildford
Castle 1990-4



Farnham Park
tile kiln 1982



Woking
Palace

2009-15



Sustainable Impact project (2018-21)



Surrey Archaeological Sustainable Impact – expanding and strengthening the Society's outreach



£90,000 invested in increased outreach and training programme which would result in:

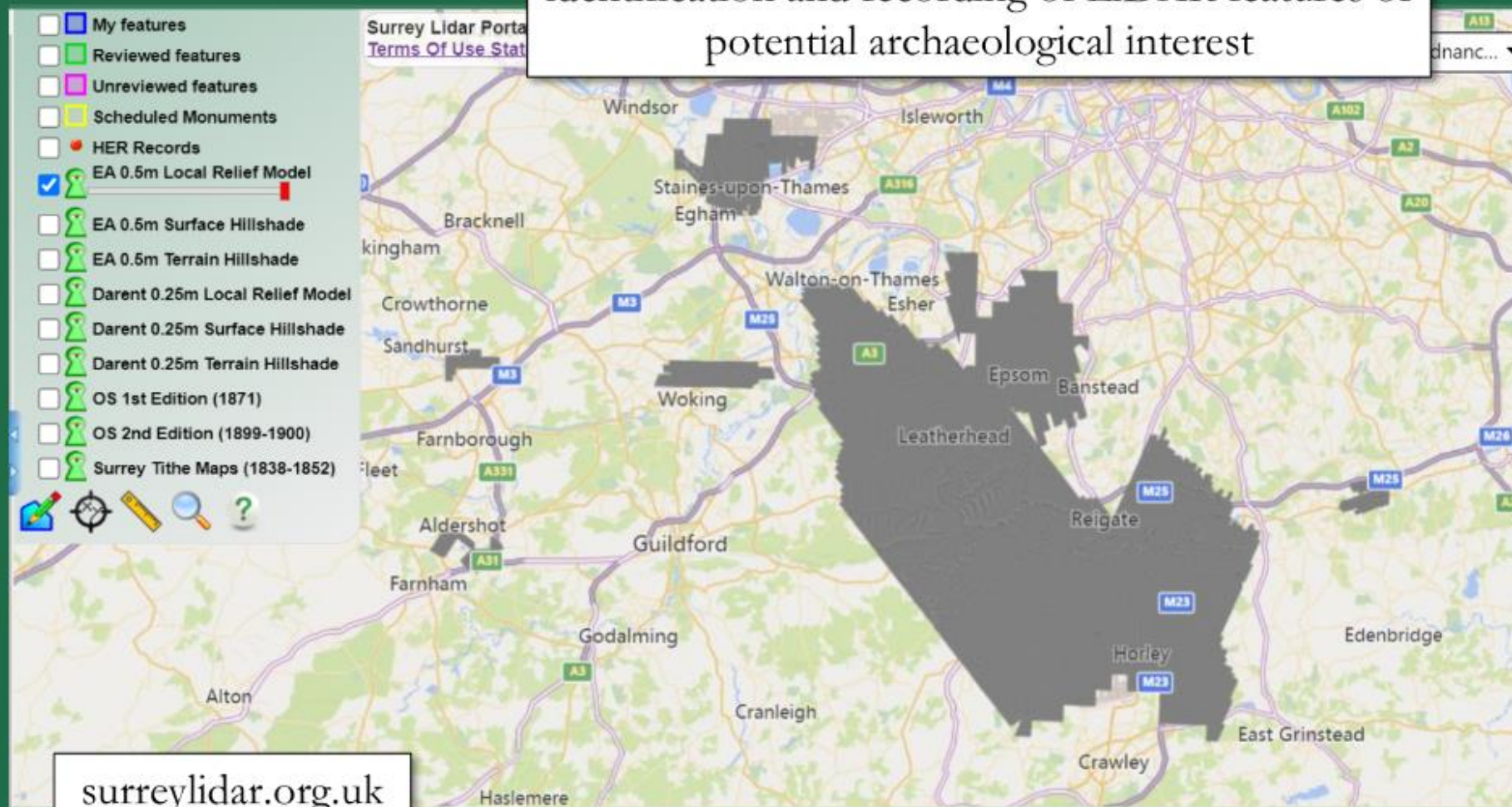
- More members recruited
- More members trained and overall increased skillset
- Greater geographic spread and presence within county
- Increased public benefit



Surrey LiDAR Portal



An interactive citizen science online mapping tool in which the public assists in the detection, identification and recording of LiDAR features of potential archaeological interest





‘Groundtruthing’ –
undertaking investigations in
the field is often necessary to
assess features





The Surrey Hills Partnership

Partnership Tour 28th October

Morning

Farming

Bill Peters

Care Farms UK

Robin Hobson

Green Prescribing

Dr Gillian Orrow

Lunch

Botley Hill

Afternoon

Titsey Brewery development

Inspiring View - Cocolith

