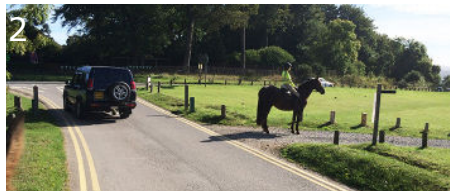


## NEWLANDS CORNER AND ST MARTHAS 10k CIRCULAR ROUTE 2½-3HRS GU4 8SE

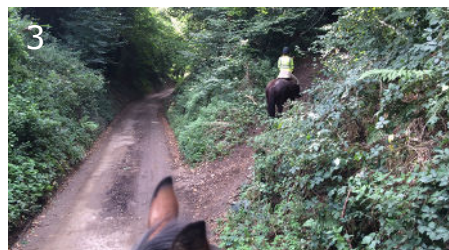
From Newlands Corner on the North Downs just outside Guildford, you can enjoy one of the most beautiful panoramas of quintessential English countryside in the South East. This ride incorporates a rich variety of countryside trails including a fabulous downland gallop, woodland paths, WWII pillbox gun emplacements and a circuit of the sandy tracks around the ancient Church of St Martha on the Hill. There is an excellent cafe at Newlands Corner and plenty of pay on display parking but be warned that it is an extremely popular beauty spot with a lot of cars and also motor bikes using the car park. Best to park trailers or lorries at the far end.



Start from Newlands Corner **1** car park off the A25, postcode GU4 8SE. This is a huge car park with a popular café so park at the far end away from the motorbikes. Ride back towards the A25 and take the grey stone track down the hill on the right just before you get to the road. This is a By-way Open to All Traffic leading to Water Lane, Albury. **2** Keep on this stone track ignoring



paths leading off. It is steep and very slippery so take care. At the bottom of the steep slope is a left hand bend and it flattens out. Keep going. Look out for the cottage roof in the trees to the left. Ignore the track on the left and take the narrow path marked with a low way marker on your right, **3** climbing steeply uphill. Up you go!



The path levels out after the climb and you emerge from the woods into glorious farmed downland. The path crosses the field with wonderful views of the downs. **4**



Go through the gap at the bottom, cross over the farm track and carry on up the sandy bridleyway the other side, with woods on the left and fields on the right. This lovely path leads all the way to White Lane. [5](#)



Cross the road and take the bridleyway immediately opposite into the car park. [6](#) There is an information board and the path crosses the wooden bridge next to it, broadening into an inviting wide yellow sand track.



This is a popular dog walking area so watch out for people on

foot. Hardly any bikes though, because of the sand! Ride up the hill past paths on left and right. Ignore the bridleyway post on your left and continue until the track forks. Take the left hand fork marked with a bridleyway sign on the right through the trees around the side of the hill. [7](#)



When you can see the church immediately above you, take care as there are a number of drain covers in the sand to do with the reservoir here. [8](#)



Keep going down the hill and the path merges with a wide track coming down from the church. At the bottom of the slope is a grassy clearing with a barrier at the end of the track. Go past the barrier. [9](#)



1

Follow the drive marked with bollards, past St Martha Priory on your left, bearing right past the car park into Halfpenny Lane. Turn right along the lane for about 100m until you come to Tyting Farm on your right and a wide sandy track on the left. **10**



Take the wide sand track all the way into Guildford through the beautiful Chantries woodland, ignoring side paths to left and right.

At the end of the track are cottages on your left and the Chantries car park in the green on your right. Historically, horses have turned left here up a narrow footpath leading to Clifford Manor Road. The path keeps to the left of the road and comes out on East Shalford

Lane. Turn left. Alternatively, go past the car park on your right and turn left down Pilgrims Way road over a succession of speed humps. Take the second road on the left, Tilehouse Road and follow round until it reaches a T junction with East Shalford Lane. Turn left. **11**



This is a quiet single track lane. After 800m you come to Manor Farm on the left. **12**



Turn left into Manor Farm and follow the drive round to the right past the barn and then bear left, keeping the farm buildings on your left. **13**



Then turn right on to the old cart track that takes you all the way back across the fields to Halfpenny Lane. 14



There is a gate at the end of the track, and you may need to 15 dismount to get through easily.



Turn right down Halfpenny Lane. This is a single track road with sharp bends but there are passing places and driveways. Be sure to wear reflective clothing and ride single file! Ride on down the hill until you come to the entrance to Chilworth Manor on your left. The road bends sharply right. 16



Go up the Chilworth Manor drive, bearing left past the entrance to the house (on your left) and turn right onto the bridleway, past the vineyard on your right. Carry on along the path through the fields until you come to a sandy track going up the hill on your left. This takes you back to St Martha's. 17



*(If you go straight on instead, you come out at Lockner Farm on the A248 opposite the bridle way to Blackheath.)*

To continue to Newlands Corner, take the left hand sand track up through the fields. The path turns sharp right along a sand causeway with barbed wire fencing on either side before snaking steeply uphill over broken bricks. Just a short stretch! You quickly emerge into lovely sand for the final climb to the junction with the main track up to the church. Bear round to the left. 18



Then take the wide path on the right down through the trees. [19](#)



This will bring you out by a cottage on the left, facing White Lane Farm. Turn left up the lane past the entrance to the farm on your right. [20](#)



This is a narrow lane with sharp blind bends so keep in to the side. Ride on up the hill. There is a footpath on the bank to your left. Look out for a flight of little concrete steps leading from the path down to the lane. There is a footpath opposite climbing steeply through trees on the right. Carry on a bit further.

You have to look carefully for the very narrow entrance to the bridgeway which is a few yards further up the road on the right. [21](#)



If you miss it, continue up the lane until you come to a big chalk track on your right. Keep to the right and you will meet the top of the bridgeway at the start of the open downland. Enjoy a kilometre of fabulous open grassland. The bridgeway follows the undulating chalk downland at the bottom of the hill beside the hedgerow, with excellent visibility. It is a very popular area so watch out for children, dogs and kite flying. Keep on this lower track right to the end. Go past the barrier [22](#) and turn left back up the grey stone track to the car park at the top of the hill.



You have earned your cuppa  
and cake at the café!

