



Corporate activities, meetings and experiences in The Surrey Hills



Contents

1	Map of Surrey with the Surrey Hills Area of Outstanding Natural Beauty	5
2	Surrey Hills Drinks Experiences	6
2.1	Wine	6
2.1.1	Denbies Wine Estate	6
2.1.2	Greyfriars	8
2.1.3	High Clandon	9
2.1.4	Albury Organic Vineyard	10
2.2	Gin	11
2.2.1	Silent Pool Distillery	11
2.2.2	Wessex Distillery	12
2.2.3	Surrey Copper Distillery	13
2.3	Rum	14
2.3.1	Ripping Yarns Distillery	14
2.4	Beer	14
2.4.1	Dorking Brewery	14
2.5	Non-alcoholic Drinks	16
2.5.1	Nordic Wellness Drinks	16
2.5.2	Chimney Fire Coffee	17
3	Surrey Hills Food Experiences	18
3.1.1	Norbury Park Farm Cheese	18
3.1.2	Mandira's Kitchen	19
3.1.3	Lavender Catering – Canapes workshop	20
3.1.4	Pan Surrey – Sourdough bread making	21
3.1.5	Moooh! Ice cream making experience	22
4	Health & wellbeing	24
4.1.1	Hedges & Hurdles Country Skills & Crafts	24
4.1.2	SHP Health (Surrey Hills Physiotherapy Ltd)	26
4.1.3	Birtley Estate	27
4.1.4	Back On Track - Guided Hikes In The Surrey Hills	29
4.1.5	Harmony in nature	30
4.1.6	The Forest Bathing Institute	31
4.1.7	HINOKI Forest Bathing	32
4.1.8	Wey & Arun Canal Bespoke Canal Cruises and Corporate Volunteering Days	34
4.1.9	The SHAC Paddle Boarding, Mountain Biking, Wild Swimming	35

4.1.10	Surrey Outdoor Learning And Development	36
4.1.11	Back On Track - Guided Hikes In The Surrey Hills	37
4.1.12	Bramley Golf Club	38
4.1.13	Merry Harriers Llama trekking.....	39
4.1.14	Just Pedal Corporate Cycling Events	Error! Bookmark not defined.
4.1.15	Surrey Hills and Rivers	40
5	Arts and craft experiences.....	42
5.1.1	Sarah J Cox – Surrey Hills Landscape Painter.....	42
5.1.2	Ruth Wheeler - Artist, Wellness Practitioner and yoga teacher.....	43
5.1.3	Hedges And Hurdles Traditional Woodland Crafts	44
5.1.4	Silver Anvil Jewellery - Design Your Own Piece	46
5.1.5	Winning with words	47
6	Sustainable living	48
6.1.1	Puremess – make your own cleaning and beauty products.....	48
6.1.2	Plant Passion – sustainable living at home	49
6.1.3	Bee Friends Ltd.....	50
7	Places to stay, meet and eat.....	51
7.1	Accommodation with meeting space	51
7.1.1	The White Horse Hotel	51
7.1.2	Denbies Vineyard Hotel	52
7.1.3	Barnett Hill Hotel	53
7.1.4	Wotton House Country Estate Hotel	54
7.1.5	Mercure Box Hill Burford Bridge.....	55
7.1.6	Richard Onslow Inn	56
7.1.7	The Merry Harriers.....	57
7.1.8	Surrey Outdoor Learning Centre.....	58
7.2	Accommodation – self catering	59
7.2.1	Broadway Barn B&B.....	59
7.2.2	Great Tanglely Manor	60
7.2.3	Gate Street	61
7.2.4	Waggoners Wild Camping, Hampton Estate	62
7.2.5	Holly Cottage, Coverwood Lakes Self Catering.....	62
7.3	Non-residential meeting space	63
7.3.1	Loseley Park	63
7.3.2	Gildings Barns.....	64

7.3.3	Fetcham Park	65
7.3.4	Hampton Estate	66
7.3.5	West Horsley Place Trust	67
7.3.6	The Smokery, Albury Estate Fisheries.....	68
7.3.7	Clandon Wood Nature Reserve and Natural Burial Ground.....	69
7.4	Pubs and restaurants	70
7.4.1	Duke of Wellington	70
7.4.2	The Drummond	71
7.4.3	Richard Onslow Inn	72
7.4.4	The Merry Harriers.....	73
8	Catering.....	74
8.1.1	Lavender Catering	75
9	Community projects	76
9.1.1	Become a Surrey Hills Corporate Champion.....	76
9.1.2	Corporate Champion tree planting day	76
9.1.3	Wey & Arun - corporate conservation day	76
9.1.4	Clandon Wood Nature Reserve and Natural Burial Ground.....	77

Key



Suggestion for a local hotel



Suggestion for dining



Wheelchair accessible



Option for corporate gifting

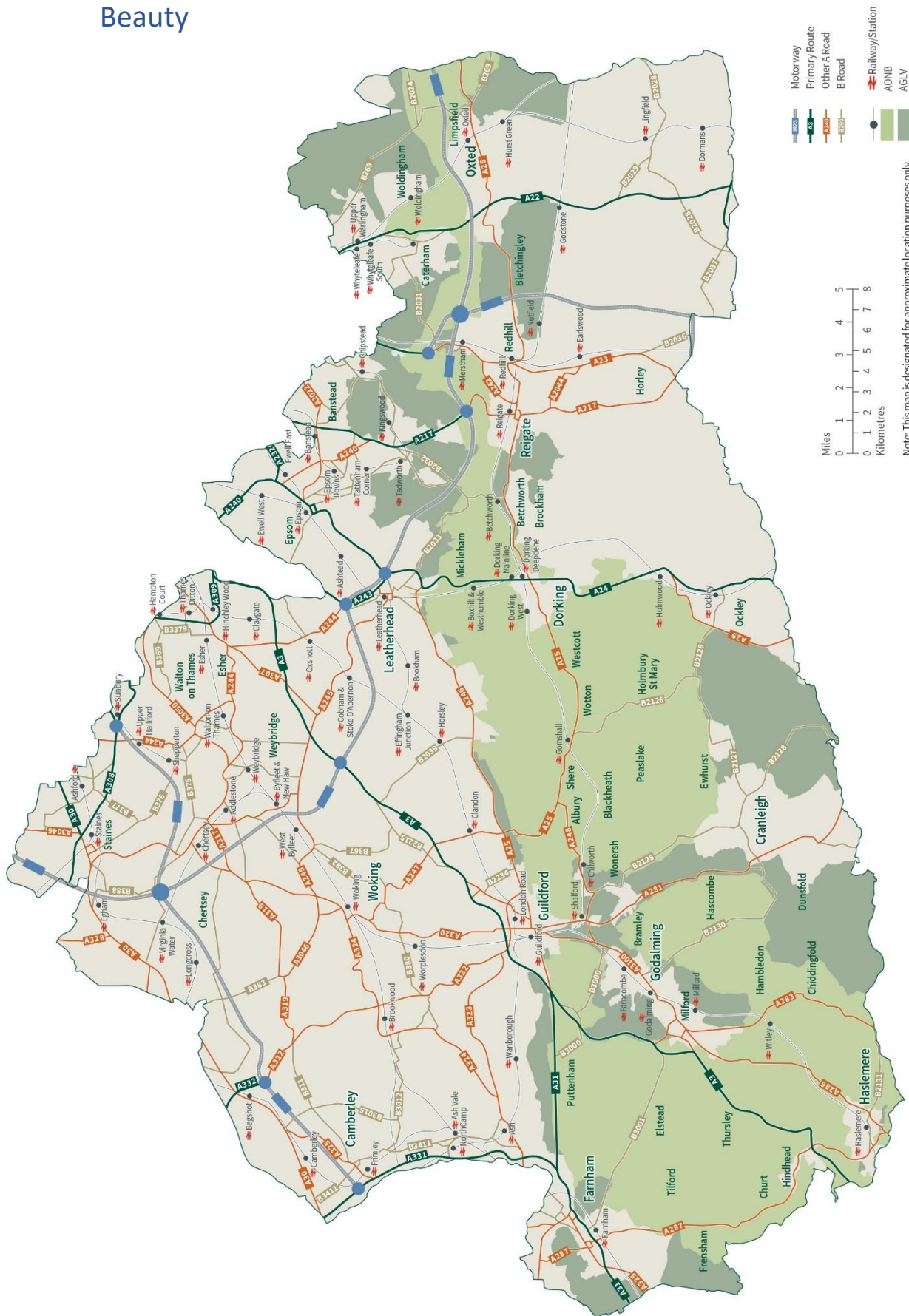


Meeting space



Location

1 Map of Surrey with the Surrey Hills Area of Outstanding Natural Beauty



Based upon the Ordnance Survey mapping with the permission of the controller of Her Majesty's Stationary Office. © Crown Copyright. Unauthorised reproduction (infringes Crown copyright and may lead to prosecution or civil proceedings). Surrey County Council, 14/01/12, 2014.

2 Surrey Hills Drinks Experiences

2.1 Wine

2.1.1 Denbies Wine Estate

<https://www.denbies.co.uk/hospitality/>

Tel: 01306 876616

Denbies offers a unique setting which can be hired out for all occasions and with a choice of meeting rooms can accommodate from 6 to 500 delegates. For Outdoor and All-Weather Team building

Denbies has 3 acres of blank canvas perfect for outdoor events.

Corporate options include.

Corporate options include.

- Crystal challenge
- Country Sports
- It's a knockout
- Spy School
- Treasure Hunts
- Apprentice Challenge: Sparkling vs Champagne
- Wine Tasting Masterclass
- Wine Quiz
- Vineyard tour



Denbies Hotel (on site), The White Horse Hotel, Burford Bridge Hotel



Denbies Restaurant, White Horse Hotel, Burford Bridge



Yes



Yes



Meeting space for 30 boardroom, 200 theatre and 2000 outdoors



Dorking



2.1.2 Greyfriars

www.greyfriarsvineyard.co.uk

info@greyfriarsvineyard.co.uk

Tel 01483813712

Greyfriars Vineyard is a 40 acre vineyard and winery based just outside nearby Guildford and Farnham in the beautiful Surrey Hills. The estate boasts a state of the art tasting room, winery and a natural chalk underground cellar. Greyfriars produces a range of award-winning sparkling and still wines on the sunny south facing chalk slopes of the North Downs. The vineyard welcomes visitors at the estate all year round.

Corporate options include.

- Private tours and tastings
- Corporate meetings
- Team-building activities
- Presentations
- Networking events



Hogs back Hotel, The Bush Hotel Farnham, The Harbour Hotel Guildford



Hogs back Hotel



Wine, vouchers, gift sets



Meeting space for 20 for boardroom, 50 theatre, 200 outdoors



Farnham and Guildford



2.1.3 High Clandon

www.highclandon.co.uk

finewine@highclandon.co.uk

Tel 01483225660 Mob 07711 266918

High Clandon Estate Vineyard, founded in 2004 by Sibylla and Bruce Tindale to create the Quintessence of England with their aged-vintage-only English Sparkling Wines. The Gold be-medalled Cuvées evidence their passion and craft. Twice winners of Cellar Door of the Year trophy.

Corporate options include

- Truffle hunt and truffle dinner
Exclusive event for up to 30 pax - In the autumn a truffle hunt with specially trained truffle hound, followed by a truffle dinner.
- Tour, Talk, Tasting - celebrated for being hugely enjoyable and informative – with tasting of Cuvée, Liqueur and Gin.
- Vertical tasting of High Clandon's of Gold be-medalled vintage Cuvées is a unique treat.
- Sabrage - Learn the Napoleonic flourish to remove the champagne cork with a sabre.
- Bee keeping and country lore demonstration.
- Wild birds and falconry demonstration

Special events - Sculpture Garden – high Summer event.

In high summer over two weeks, a fabulous Art and Sculptures in the Vineyard exhibition is mounted in the gardens, wildflower meadow and Glass Barn with over 170 works of art on show.

10% of any art sales go to Cherry Trees charity for children with disabilities.



Wotton House Hotel, Hurtwood Hotel Peaslake, Guildford Manor Hotel,



Mandiras Kitchen, The Duke of Wellington, Michelin starred restaurant in Ripley - The Clockhouse



Yes



Cuvée gift pack – plus variations with High Clandon Cuvée glasses



Meeting space for 30 pax indoors and garden setting up to 100 pax outdoors



East Clandon, Nr Guildford

2.1.4 **Albury Organic Vineyard**

www.alburyvineyard.com

info@alburyvineyard.com

Tel 01483 229159

Albury is a small, family-run organic vineyard located in the beautiful Surrey Hills, producing the highest quality English sparkling wines.

Corporate Options include: -

- Guided vineyard tour and wine tasting with a member of the Albury team
- Artisan tasting days with Silent Pool Distillery and Norbury Blue - treat your team to a day of delicious cheese, wine and gin tasting
- Willow weaving workshops with local artist Lorraine
- Bee-keeping demonstrations with local bee-farmer Sergio who looks after the Albury Vineyard hives
- Yoga in the vineyard
- Mindful wildlife walks
- Catering options are available for brunch, working lunches, afternoon tea, evening canapés and buffet dinners featuring local Surrey Hills produce



Guildford Manor Hotel, Wotton House Hotel, Hurtwood Hotel, Peaslake



Mandiras Kitchen, The Drummond Pub



Wine gifts available with hassle-free delivery to multiple addresses and personal messages added to each gift



Meeting space for 20 pax boardroom, 35 theatre and 100 pax outdoors



Albury, Nr Guildford



2.2 Gin

2.2.1 **Silent Pool Distillery**

<https://silentpooldistillers.com/>

Tel: 01483 229136

Silent Pool Distillers handcraft luxury gins in the distillery located next to the legendary Silent Pool.

Drawn by common passion for craft distilling, a group of friends came together to create a new kind of distillery, producing handcrafted, artisan spirits of uncompromising quality, with a vision for a sustainable business.

Corporate Options include: -

- 90-minute distillery tour
 - G&T afternoon tea and distillery tour
- Artisan tasting day - Sample the delights of Albury Vineyard, Norbury Park Cheese and Silent Pool Distillers on a 5-hour tour and tasting event.



Guildford Manor Hotel, The Drummond, Wotton house Hotel, Hurtwood Hotel Peaslake



Mandiras Kitchen, The Drummond Pub



Yes



Yes



Albury, Nr Guildford



2.2.2 Wessex Distillery

<https://wessexdistillery.com/pages/gin-making-experience>
info@wessexdistillery.com

Tel: 01428 684545

A family-run, local craft gin distillery in Surrey striving to create the best English gin, and nothing less.

Corporate Options include: -

Why not bring your team to our family-run distillery for a fun experience; creating & making their very own bottle of gin.

Here's what happens:

- Welcome & Wessex gin and tonic
- Distillery tour and description of the process we use to make Wessex gins
- Gin sampling to help develop everyone's understanding of gin profiles
- Then over to the Gin Lab to explore the botanicals and design the gin recipe
- Distil the gin in one of our mini copper stills
- Create the personalised labels
- Each participant will go home with a personalised 70 cL bottle of their own gin
- £5 off any 70cL Wessex gin bottle of your choice



We can accommodate teams of up to 12 people and if you like a little healthy competition, then we can set up a blind-tasting to determine which is the winning gin.

The Wessex Distillery Gin Lab Experience is an enjoyable, immersive event that brings teams together and is suitable for beginners and gin enthusiasts alike.

The tour & Gin Lab Experience take 2-3 hours. All participants must be 18 years or over. We are set up to be compliant with the government's COVID-19 advice.



Merry Harriers, Godalming



Merry Harriers, Godalming



Yes



Chiddingfold, Nr Haslemere



2.2.3 **Surrey Copper Distillery**

<https://www.thesurreycopperdistillery.com/>

enquires@thesurreycopperdistillery.com

Tel: 01483 921121

An independent craft distillery founded by the Smart family in 2017 with the aspiration of creating a library of distinguished spirits inspired by history and reflecting the very essence of England. Our passion is to make the finest of spirits.

Corporate Options include: -

- **Exclusive behind the scenes distillery experience**

A private tour and tasting with the chief distiller who will tell you all about the fundamentals of gin, how gin is made and introduces you to some of the botanicals used to make Copperfield London Dry Gin. You will also meet Clara - their unique 300 litre mini carterhead, solid copper still.



Private tours can also include cocktail making and local food



Barnett Hill Hotel



Richard Onslow Pub



Yes



Yes



Cranleigh



2.3 Rum

2.3.1 Ripping Yarns Distillery

<https://www.rippingyarnsdistillery.com/>

andrew@rippingyarnsdistillery.com

Tel 07885 223148

A family-run Artisan distillery in Wormley creating award-winning craft rums using the finest fresh botanicals, fruits and spices. The distillery is one of very few in the UK that produces its Rums completely from scratch under a “molasses to glass” production ethos

Corporate options include

- Private distillery tour showing all the production steps from fermentation, through distillation to bottling, with welcome drink and Rum tasting
- Presentation at your premises describing the Rum making processes, with welcome drink and Rum tasting



Merry Harriers, The Swan Inn



Merry Harriers



Rum



Godalming



2.4 Beer

2.4.1 Dorking Brewery

www.dorkingbrewery.com/brewery-tours

info@dorkingbrewery.com

Tel 01306 877988

A carbon negative brewery helping the Surrey Hills environment we live in. They make over 10,000 pints per week of exciting, modern style beers but keep to traditional brewing methods along the way, inspired by the best ingredients, flavours and techniques from all over the world.

Dorking Brewery's beer-making process is as natural and environmentally friendly as possible. 97% of their grain comes from East Anglia, and the spent grain is taken 15 metres down the farm to be fed to the local dairy herd.

An on-site taproom and shop is also open every day, including weekends, with brewery tours taking place every Saturday by advance booking only.

Corporate options include: -

- Bespoke brewery tour & tasting package



Denbies Hotel, The White Horse Hotel, Burford Bridge Hotel



Denbies Hotel, The White Horse Hotel, Burford Bridge Hotel



Beer



Dorking



2.5 Non-alcoholic Drinks

2.5.1 Nordic Wellness Drinks

www.nordicwellnessdrinks.com

pep@nordicwellnessdrinks.co.uk

Tel: 07966 035297

Nordic Water Kefir is a refreshing, fermented drink bursting with live cultures that support a healthy gut, active digestion and give the immune system a natural boost.

At the Surrey Hills Fermentary, Nordic Water Kefir is hand-crafted using certified organic live water kefir grains. All their drinks are developed, fermented, bottled, capped, labelled and sent from their farm in the Surrey Hills.

Corporate options include: -

Surrey Hills Fermentary Tours - meet Malene, the resident viking and Master Fermenter and learn more about why fermented food and drink is so good for gut health and Good Health!



Barnett Hill Hotel, Richard Onslow Inn



Richard Onslow Inn



Cranleigh



2.5.2 Chimney Fire Coffee

<https://chimneyfirecoffee.com/>

hello@chimneyfirecoffee.com

Tel: 01483 664154

A speciality coffee roaster based in Surrey. Selling ethically sourced coffee beans online, coffee subscriptions and coffee experiences
Corporate options include: -

Bean to Cup Coffee Experiences and Brew Masterclasses

These masterclasses (available in-person or virtually) are all about flavour and brewing. During the sessions, they will take your clients or team on a sensory journey to help them work out what they like and why, teach them how to brew using the V60 brewer, and run through our top tips - everything from the best storage, to avoiding over-caffeinating.



Denbies Hotel, The White Horse Hotel, Burford Bridge Hotel



Duke of Wellington Pub



Coffee and vouchers



Ranmore, Nr Dorking



3 Surrey Hills Food Experiences

3.1.1 Norbury Park Farm Cheese

<https://www.norburyblue.co.uk/>

Tel: 01306 710001

Norbury Park Farm Cheese Company Ltd is a small family run company who pride themselves on their handmade artisan product and non-commercial attitude.

Corporate options include: -

- Cheese Experience Tour

Including the story of Norbury Blue & Dirty Vicar, demonstration, tastings and a wedge of cheese of your choice to take home.

- Denbies Cheese & Wine Making Experience

Learn all about cheese making followed by an insight into wine making with Denbies wine specialist. Enjoy a morning at Norbury Blue dairy with lunch at Denbies Gallery Restaurant followed by an afternoon of wine tasting. All refreshments throughout the day are included and to go home a bottle of Surrey Gold and wedge of cheese of your choice.



The Drummond, Wotton House Hotel, Hurtwood Hotel Peaslake, Guildford Manor Hotel



Mandiras Kitchen, The Drummond Pub



Cheese



Albury, Nr Guildford



3.1.2 Mandira's Kitchen

<https://www.mandiraskitchen.com/>

enquiries@mandiraskitchen.com

Tel: 01483 940789

Mandira's Kitchen creates delicious meals using fresh, local produce, family recipes and lots of love. Absolutely no preservatives or unpronounceable bits. Mandira also spreads her enthusiasm and love of Indian cookery through classes, spice tours and supper clubs

Corporate options: -

- Take your team on a culinary and spice masterclass. These half day sessions include a spice masterclass and hands on cooking of five authentic Indian dishes followed by a sit-down lunch or dinner with a glass of something. Fun and interactive, these prove very popular as team building events or away days.
- Mandira's supper clubs are a delightful mix of theatre and delicious food, where your team will be taken on a culinary journey into India through 4 wonderful courses inspired from our memories and travels. Each course is served beautifully on Thalys (platters) and comes with an optional wine or cocktail pairing and a story behind the dish.
- Chai on the Patio which has 24 spaces and ideal for a quick catch up meeting midweek or can be hired for exclusive use for events



The Drummond, Wotton House Hotel, Hurtwood Hotel Peaslake, Guildford Manor Hotel,



Mandira's Kitchen, The Drummond Pub



Cookery kits, meals and vouchers



Albury, Nr Guildford



3.1.3 Lavender Catering – Canapes workshop

<https://www.lavendercatering.co.uk>

feedme@lavendercatering.co.uk

Tel: 01372 800626 / 07836358333

Lavenders prep kitchen is nestled in the lovely village Bookham within the Surrey Hills. Their pledge is to source and feed you within a 25-mile radius of our kitchen so most of their food comes directly from the fields, bakeries, and farms within the Surrey Hills.

They cater for all kinds of events, celebrations, Team building, Corporate Entertaining and special occasions.

Corporate options: -

Bring your team to their prep kitchen to get the aprons on and learn how to make some fabulous canapes that will definitely wow your guests at the next party. The day starts with an intro to the team, a proper bacon brioche, fruit and some delicious fresh coffee.

They will then talk about all the ingredients you are going to use, where they come from, what to look for when you shop, how to shop for them and then you will start creating some fabulous canapes using lots of 'chefs tips and tricks' and how to plate and present them.

You then get a chance to eat what you have made! Followed by a lovely lunch loaded with flavour and fresh ingredients and a glass of locally produced wine.

They are happy to host your team in their kitchen or they can come on site to your premises or home.

The workshop is a 4 hour experience and includes lunch and a take home goodie bag of sweet treats. They cater for all dietary requirements.



Denbies hotel, The White Horse Hotel, Burford Bridge Hotel, De Vere Horsley Estate



Duke of Wellington pub, Queens Gambit Pub, The plough Pub, Denbies, Burford Bridge Hotel



Option for corporate gifting



Great Bookham, Leatherhead



3.1.4 Pan Surrey – Sourdough bread making

<https://pan-surrey.co.uk/>

pansurrey@gmail.com

Tel 07528854938

Artisan bread maker specialising in sourdough Bread

Corporate options

- Bread baking for 4 people.

The classes take place over two consecutive half days and are perfect for absolute beginners and those looking to improve their bread-making skills.



Denbies Hotel, The White Horse Hotel, Burford Bridge Hotel



Duke of Wellington Pub



Dorking



3.1.5 Moooh! Ice cream making experience

<https://www.moooh.co.uk/>
hello@moooh.co.uk

Tel 07745 885678

A local family business making delicious innovative, locally sourced ice cream. Learn to make your own ice cream with Chef Mike, a third generation Cranleigh local, who trained and worked as a chef at The Savoy Hotel, London followed by heading up food and product development with Mars Foodservice, Nestle and Compass UK.

Corporate options

- Ice cream experience for 4 people.

A 3-hour immersive experience at Moooh ice creams studio, to include making your own choice of flavoured ice cream and sorbet, enjoying a three course ice cream experience followed by ice cream cocktails.

Participants will take away a goodie bag full of ice cream, ideas on how to create your own at home and ice cream related gifts.



Barnett Hill Hotel, Richard Onslow Inn



Richard Onslow Inn



Option for corporate gifting



Cranleigh



3.1.6 The Abinger Cookery School

<https://abingercookeryschool.com/corporate/hello@abingercookeryschool.com>

Tel 01306 730470

If you want to try something a little different for your next work party, team-building day or client meeting, we've got the perfect solution.

Our hands-on cooking classes are designed to be creative, informative and fun, and we have the flexibility to offer private bookings for groups of six or more.

With our wealth of knowledge and local suppliers, we'll help you choose a menu starring fresh, seasonal ingredients your guests will love and customise the structure of your session to meet your needs. We can even fire up the grills in our outdoor pergola kitchen, which allows visitors to enjoy our selection of Weber Grill Academy courses all year round!

We offer both half-day and full-day classes, where you'll be welcomed with a tasty batch of Lizzie's homemade cookies and enough coffee to fuel you for the day. Alternatively, book an evening course, and we'll hand you a glass of prosecco on arrival before getting started.

Under the guidance of our professional chefs, your team will learn new skills and techniques — from food preparation and knife skills to more technical elements — as they prepare and enjoy a delicious feast in our modern, fully equipped kitchens.



No matter your requirements, our team will take care of everything from the planning to the washing up to ensure your event runs smoothly.



Barnett Hill Hotel, Wotton House, Guildford Manor Hotel



Meeting space for up to 16



Option for corporate gifting



Abinger



4 Health & wellbeing

4.1.1 **Hedges & Hurdles Country Skills & Crafts**

<https://hedgesandhurdles.com/groups/corporate/>

lorraine@hedgesandhurdles.com

Tel: 07446837492

Hedges & Hurdles offer you the opportunity to bring your team together by creating an outdoor experience to re-group and get your team's creative juices flowing and invigorated.

Get your team creative with Wood Art or choose from a wide selection of Willow workshops to weave garden art and animal sculptures, plant supports, living willow projects and more with Lorraine.

- 8 – 40 people (sometimes more)
- 2.5-to-6-hour workshops (or multi-day retreats)
- Hosted at 3 key locations across Surrey Hills (or we can come to you!)
- Optional catering (delivered by our corporate partners)

Example: Willow & Wine Experience

There is something about working with Willow that is both mindful and relaxing! Join Lorraine at the picturesque Albury Organic Vineyard, Silent Pool, Shere, Guildford for either a morning, afternoon or full-day workshop learning to craft with Willow and the vineyards home-grown Vines! Each workshop includes a glass of delicious Albury Estate sparkling wine.



Cost
2.5-hour Workshop £59 p.p.
Lunch £15 p.p.
Wine Tour & Tasting £25 p.p.



Denbies Hotel (on site), The White Horse Hotel, Burford Bridge Hotel, Wotton House Hotel



Denbies Hotel (on site), The White Horse Hotel, Burford Bridge Hotel



Vouchers



Bramley, Fetcham / Dorking and Willow Craft courses at Albury Vineyard, Silent Pool, Albury.



4.1.2 SHP Health (Surrey Hills Physiotherapy Ltd)

www.surreyhillsphysiotherapy.co.uk

info@surreyhillsphysiotherapy.co.uk

Tel: 01306 640149

A family-owned Health & Wellbeing Centre with its base in the heart of Dorking, in The Barn on the Denbies Wine Estate. Offering specialist services including Physiotherapy, workshops & retreat days, and daily classes including Pilates, Yoga, Barre, Tai Chi. Also offering courses for the public and for health professionals as well as corporate packages, massage and reflexology.

Corporate options: -

Our specialist team of instructors bring you a range of bespoke classes online or in the studio. Choose from a range of instructors and teaching styles in our signature Pilates, Barre Tai Chi & Yoga classes.

Online: Many companies have changed the way they work and hence our Pilates & Yoga classes are easily available to stream online. By clicking on a link, staff can access high quality, health professional-led content from the comfort of their own home or workspace. Talk to us about how we can tailor make a package for your company.

In Studio: We have extensive experience with organising private and bespoke classes for companies on a weekly or monthly basis.

Bespoke wellbeing packages for companies / team

away days: We also run bespoke retreat and wellbeing days tailored to the specific needs of your team. Please contact us for further details on bespoke packages, including options for coordinating meal options at the Vineyard Restaurant and overnight stays at The Denbies Vineyard Hotel (both situated next door to "The Barn"). We also have options to tie in packages with wine tastings, cycle rides and any number of outdoor and indoor activities on the Denbies Wine Estate. Please email us for more details.



Denbies Hotel (on site), The White Horse Hotel, Burford Bridge Hotel



Denbies Hotel (on site), The White Horse Hotel, Burford Bridge Hotel



Yes



Vouchers and merchandise



Dorking



4.1.3 **Birtley Estate**

<https://www.birtleyestate.co.uk>

info@birtleyestate.co.uk

Tel: 01483 678394

The Birtley Estate is actively managed for nature. It also provides a site for a small community of local artisans presenting a range of courses and activities for both adults and children.

Corporate options: -

- Stone carving skills
- Woodworking
- Willow weaving
- Pyrography
- Bushcraft
- Mindfulness in the woods
- Mindfulness hikes
- Japanese art of Forest Bathing
- Sacred Drumming
- Drum making
- Outdoor yoga
- Fly fishing
- Beekeeping
- Forest School Pre-school and holiday courses



Barnett Hill Hotel



Richard Onslow Pub, Cranleigh



Bramley



Vouchers and merchandise



4.1.4 Back On Track - Guided Hikes In The Surrey Hills

<https://www.backontrack.live>

Tel 07598 123 956

Guided group hikes, walks with drink & dine experiences including collaboration events with other Surrey Hills business for a social and rewarding walking experience, such as Silent Pool walk with Gin distillery tour and tasting or Surrey Hills Walk & Biryani on the patio with Mandira's kitchen. Simone is a qualified hiking guide and a North Downs Ambassador with extensive knowledge about the Surrey Hills.

Simone is also a fitness and running coach and can train your team to take part in fitness or running challenges.

- Country walk with Silent Pool Gin tour & tasting experience
- Surrey 3 peaks hike with pub finisher
- Surrey Hills walk with Biryani on the patio finisher
- Off the beaten track hikes with North Downs Ambassador Simone
- Hiking planning and training for team challenges & events
- C25k and group run coaching for teams/events



Wotton House Hotel, Hurtwood Hotel Peaslake, Guildford Manor Hotel



Mandiras Kitchen, The Drummond Pub



Guildford, Silent Pool, Albury



4.1.5 **Harmony in nature**

<http://www.harmonyinnature.uk>

katieandjo@harmonyinnature.co.uk

Tel 07930 414525

Harmony In Nature offer forest bathing and nature therapy sessions which involve a slow exploration of nature through your senses.

Corporate options: -

- Private group sessions which enable your team to slow down, de stress, connect with nature, benefit from the quality of woodland air and develop a sense of calm and balance
- Help your team to develop ideas for increasing their own physical, mental and emotional wellbeing as well as their connection to nature, so the benefits continue beyond the session.
- The natural group support during sessions becomes apparent during an event, which makes bespoke sessions ideal for building collaboration within teams, and bringing different teams together.



They also offer nature connection events outside of woodland and can assess for suitability any locations you may have in mind.



Vouchers



Horsel Common, Woking and Shere - other locations available

4.1.6 The Forest Bathing Institute

www.tfb.institute

info@tfb.institute

Tel: 01932 880712

The Forest Bathing Institute (TFBI) is an international organisation launched by a Surrey Hills husband and wife team. TFBI help people improve their mental health and wellbeing by using natural settings. TFBI works with 20 universities, government departments and the NHS, having developed a unique form called Forest Bathing+. FB+ is used across the UK as a more therapeutic form of forest bathing, underpinned by mindfulness

- Connect with nature on an immersive level.
- Fun wellbeing team building programmes with proven positive mental and physical benefits.
- assist your staff with health, well-being, and stress related issues.
- half and full day events, plus team building weekends



The Drummond, Wotton house Hotel, Guildford Manor Hotel, Hurtwood Hotel Peaslake



Mandiras Kitchen, The Drummond Pub



Guildford



4.1.7 HINOKI Forest Bathing

<http://www.hinokiforestbathing.co.uk>

lisa@hinokiforestbathing.co.uk

HINOKI Forest Bathing uses nature-related mindfulness experiences, such as Forest Bathing and Foraging as well as various mindfulness and meditation practices, such as Mindfulness & Meditation, Gong Bath, and Restorative Yoga, to bring our bodies and minds closer to a state of calm and relaxation and gaining tools for coping with stress and anxiety.

Forest Bathing

Immerse your senses in the forest to connect with nature and find your sense of being, boosting your immune system, health and wellbeing. Capacity: up to 15 with one guide, 30 with two guides.

Mindfulness and Meditation

Learn to access practices that help to reduce anxiety, stress, depression and improve cognition and concentration. Capacity: 20 with one teacher.

Foraging Walks

Learn to identify herbs, mushrooms and other edible and medicinal plants and mushrooms, and in the process become closer to nature. Capacity: 15 with one guide.

Herbal Medicine Workshop

Create teas, salves, tinctures and oxymels for everyday health remedies and strengthening your immune system and wellbeing. Capacity: 10 with one teacher.

Gong Bath

Experience deep relaxation helping you to connect to your body as the vibrations of the gong soothes the nervous system, helping you to relax and relieve stress and calming the mind. Capacity: 20

Restorative Yoga

Lean into relaxation, shifting from a constant state of stress known as our sympathetic response, to a more relaxing and calming state. Capacity: 15

Capacity: We are able to accommodate up to 50 participants with various activities at once.



The Drummond, Wotton house Hotel, Guildford Manor Hotel, Hurtwood Hotel Peaslake



Various locations around the Surrey Hills



5 Explore the great outdoors

5.1.1 Wey & Arun Canal Bespoke Canal Cruises and Corporate Volunteering Days

<https://weyarun.org.uk>

support@weyandarun.co.uk

Tel: 01483 505566

Charity restoring the Wey & Arun Canal - London's lost route to sea

Corporate options: -

- They can offer bespoke private canal cruises along the scenic Wey & Arun Canal. They have three boats available for private hire, catering from 9 to 48 passengers and provide a full crew and skipper. Both their large boats offer flexible seating arrangements and a toilet, and the electric boat Wiggonholt has an access lift for wheelchairs and mobility impaired passengers. Catering can also be provided.
- Community work ranging from restoration work to clearing towpaths, painting lock furniture and tree planting
- Corporate conservation days
- Free Parking



Grantley Arms - Wonersh



Grantley Arms - Wonersh



Bramley



Membership vouchers



5.1.2 The SHAC Paddle Boarding, Mountain Biking, Wild Swimming

<https://www.theshac.co.uk/>
info@theshac.co.uk

Our Corporate Events can be put together to suit individual groups and can last from anything between an hour to a couple of days. SHAC activities can be combined into a programme to suit your needs and full or partial catering is available.

Corporate options: -

- Stand Up Paddle Boarding
- Open Water/Wild Swimming
- SUP Yoga and Wild Yoga
- Spoon Carving
- Bushcraft and Foraging
- Mountain Biking Guiding and Skills Training - Own Bikes Needed.



Denbies Hotel, The White Horse Hotel, Wotton house Hotel, Guildford Manor Hotel, Hurtwood Hotel Peaslake



Mandiras Kitchen, The Drummond Pub



Yes



Vouchers



Buckland Park Lake in Reigate and Dapdune Wharf in Guildford.



5.1.3 Surrey Outdoor Learning And Development

<https://www.surreyoutdoorlearning.uk/corporate>

Email address: [corporate enquiry page](#)

Tel 01372 378901

Surrey Outdoor Learning & Development (SOLD) work with professional teams to achieve real personal development and positive behavioural change through challenges set in the outdoors. They offer bespoke corporate development programmes that deliver a real return on investment.

SOLD's team development programmes are designed to promote self-evaluation, thus enabling an employee to identify their own core strengths and potential limitations. Participants are encouraged to formulate an action plan with the aim of enhancing personal performance back in the workplace.

SOLD will design and deliver a bespoke team development package for your organisation based around your specific needs and outcomes from a one-day visit to a week-long residential stay.

Corporate options: -

- Team building
- Abseiling
- Archery
- Challenge course
- Climbing
- Woodland skills
- Orienteering
- Canoeing
- Kayaking
- Raft building
- Mountain biking



On site accommodation – teepee/log cabin/yurt or a preferred rate at Mercure Burford Bridge Hotel for Dorking bookings.



In house catering



Meeting space for up to 120 pax indoors



High Ashurst, Nr Dorking, Henley Fort Nr Guildford, Angel Blue Canal Boat at Dapdune Wharf in Guildford and Thames Young Mariners



5.1.4 **Back On Track - Guided Hikes In The Surrey Hills**

<https://www.backontrack.live>

simone@backontrack.live

Tel 07598 123 956

Guided group hikes, walks with drink & dine experiences including collaboration events with other Surrey Hills business for a social and rewarding walking experience, such as Silent Pool walk with Gin distillery tour and tasting or Surrey Hills Walk & Biryani on the patio with Mandira's kitchen. Simone is a qualified hiking guide and a North Downs Ambassador with extensive knowledge about the Surrey Hills.

Simone is also a fitness and running coach and can train your team to take part in fitness or running challenges.

- Country walk with Silent Pool Gin tour & tasting experience
- Surrey 3 peaks hike with pub finisher
- Surrey Hills walk with Biryani on the patio finisher
- Off the beaten track hikes with North Downs Ambassador Simone
- Hiking planning and training for team challenges & events
- C25k and group run coaching for teams/events



Wotton house Hotel, Guildford Manor Hotel, Hurtwood Hotel Peaslake



Mandiras Kitchen, The Drummond Pub



Guildford, Silent Pool, Albury



5.1.5 **Bramley Golf Club**

<https://www.bramleygolfclub.co.uk>

sarah@bramleygolfclub.co.uk

Tel 01483 892696

Bramley Golf Club has a high quality, beautifully maintained golf course set in the Surrey Hills AONB.

They benefit from panoramic views over the surrounding countryside and have a wonderful clubhouse, terrace, driving range in addition to the golf course.

Corporate options: -

- Golf Society Days
- Corporate meetings
- Breakfast, lunch or dinner meetings
- Parties & Celebrations
- Wakes



Barnett Hill Hotel



Yes



On site Dining



Meeting space for up to 25 - 110 pax indoors - 110 in dining format



Bramley



5.1.6 Merry Harriers Llama trekking
<https://merryharriers.com/llama-treks/>
Tel 01428 682883

Expect an element of the unexpected with a friendly herd of 12 Llamas.
Corporate options: -

Enjoy Llama Trekking in the Surrey Hills, their formidable pack of llamas are the perfect companions for a trek through the Surrey Hills – whatever the weather!

They trek throughout Winter to the dizzy heights of Summer, with your experienced Guide providing fun facts about the llamas and providing a route with scenic views and stunning vistas. A memorable and motivating group activity for corporate away days and team building. In the warmer months, enjoy a typical Surrey picnic carried by your llama, or dining back at the cosy inn in the cooler months.
(see accommodation section)



Merry Harriers



On site Dining



Vouchers



Hambledon

5.1.7 **Surrey Hills and Rivers**

<https://www.surreyhillsandrivers.co.uk/activities/>

surreyhillsandrivers@gmail.com

Tel: 07878 105016

We believe that every day should include activity outdoors, whatever the season and whatever the weather. We facilitate an outdoor life for people of all ages, backgrounds, means and abilities, by providing outdoor experiences through a range of activities.

Corporate options: -

The Main event typically revolves around kayaking, canoeing, cycling or hiking journeys, challenges and adventures through the Surrey countryside. These activities also take in local sights and can even combine with visits to Surrey Hills artisans such as local wine-makers.

The package can include comfortable bell tent camping, outdoor dining in our amazing atmospheric polytunnels, a roaring campfire and as many other rural/farming experiences that you want to pack in, such as bat tours, muesli workshop, bushcraft, mosaicing, wine tours, nature trails, treasure hunts.

Dining, meeting and wet weather spaces include 2 purposely refurbished and fitted out agricultural standard polytunnels of 14m x 9m, as well as our fantastic converted calf-rearing boxes and quirky converted horse box, both suitable for craft activities.

Excellent shower and toilet facilities.



On site Accommodation consists of up to 15 bell tents for up to 60 guests. Comfortable beds provided, just bring your sleeping bag or duvet, and pillows



Onsite “weather proof” out door dinning



Meeting space for up to 60 pax



Haslemere



5.1.8 Off Root

[Http://www.offroot.co.uk](http://www.offroot.co.uk)

Hello@offroot.co.uk

Tel: 07719285265

MOUNTAIN BIKE EXPERIENCES & ADVENTURES

MTB adventures, tours, guiding and coaching in Surrey, Hampshire and West Sussex. Off Root was founded in 2016 by Jackie Field, an experienced cyclist with a passion for biking.

Corporate options: -

Exhilarating guided mountain biking and road riding experiences and adventures as well as skills coaching.

We know catering is important on a corporate day so let us take care of this.

We can arrange hill side breakfasts and lunches, stops at local gastro pubs, breweries, vineyards, distilleries tours enroute. We can even offer a more simple rustic camp fire with BBQ and local beers, wines and gins to sample.

Groups up to 24



Old Thorns - Liphook
Lythe Hill - Haslemere
The Georgian Coppa Club - Haslemere
Millbridge Court – Frensham



The Deers Hut - Liphook
The Holly Bush - Frensham
The Duke of Cambridge - Tilford
The Noahs Ark - Lurgashall
Rising Sun – Milland



Vouchers



Hindhead, Surrey



6 Arts and craft experiences

6.1.1 **Sarah J Cox – Surrey Hills Landscape Painter**

<https://sjcoxart.co.uk>

sarah@sjcoxart.co.uk

Tel: 07832259595

Renowned landscape painter specialising in the Surrey Hills
Corporate options: -

Small group (2 to 6 people) workshops in Sarah's art studio.

Half day workshops typically include homemade cake, teas/coffees and a glass of prosecco. Light lunches can be added.

Workshops include

- abstract landscape painting
- abstract art
- lino printing
- Mixed media experimental drawing and painting inspired by nature.



All materials for the workshop will be included.



Barnett Hill Hotel, Wotton House Hotel, Hurtwood Hotel Peaslake, Guildford Manor Hotel,



Queen's Head pub in Clandon, The Ivy or The March Hare in Guildford.



Yes



Art



Guildford



6.1.2 Ruth Wheeler - Artist, Wellness Practitioner and yoga teacher

<http://www.ruthwheeler.co.uk/>

Tel: 07769 906529

Ruth has over twenty years' experience working as a freelance sculptor, working with natural shapes and grains of wood creating unique collections. Ruth also runs workshops to share her love of wood sculpting with you.

Corporate options: -

- Pyrography workshops
- Woodcarving workshops
- Yoga / Dance / Creative Retreat days
- Wellbeing and Mindfulness workshops/days
- Mindful Painting In the Woods
- Hand building with Clay workshops
- Mindful Creative WORKSHOPS



Ruth can run separate workshops offering mindfulness, arts, crafts, dance yoga, fire circle or combine them to suit your requirements. Located at Birtley Woodland Art Space in the Woods or a location near you.



Barnett Hill Hotel



Onslow Arms pub



Wood art and vouchers



Godalming and Bramley



6.1.3 Hedges And Hurdles Traditional Woodland Crafts

<https://hedgesandhurdles.com/groups/corporate/>

lorraine@hedgesandhurdles.com

Tel: 07446837492

Husband and wife team, Lorraine and Paul Matthews are passionate about sharing their knowledge and skills with others, encouraging people to discover a newfound love for nature and the outdoors!

Introduce your teams to the heritage of Surrey with traditional green woodworking skills including Coppicing and Wattle Hurdle Training Courses, Chestnut Gates, Walking Sticks, Arch's and Rose Arbor's all delivered by an award winning Hedgelayar, Paul Matthews.

- 8 – 20 people (sometimes more)
- 3-to-6-hour experience (or multi-day retreats)
- Hosted at 3 key locations across Surrey Hills (or we can come to you!)
- Optional catering



Example: Woodland Skills Experience

In this practical 3-hour experience you will be introduced to the vintage hand tools used to craft Sweet Chestnut fencing posts and hedging stakes. Immerse your team in the peaceful surroundings of the picturesque 1,300-acre woodland at Norbury Park, Dorking and prepare your team for an unforgettable experience!

Cost

Experience @ £75 p.p.

Lunch @ £15 p.p.



Barnett Hill Hotel



Onslow arms pub



Wood art and vouchers



Bramley, Fetcham / Dorking and Willow Craft courses at Albury Vineyard, Silent Pool, Albury.



6.1.4 Silver Anvil Jewellery - Design Your Own Piece

www.silver-anvil.co.uk

Tel: 07806 474515

Victoria Phillips is a renowned designer and jewellery maker in Ranmore Common makes both ready-made and commissioned jewellery, inspired by the beautiful landscape of the surrounding Surrey Hills.

Corporate options: -

A fun and rewarding experience resulting in a piece of jewellery that holds memories and stands the test of time.

Visit Victoria's workshop deep in the Surrey Hills to see where and how she works. She will also show you some finished examples demonstrating the techniques that she use.

You can then chat about the type of jewellery you like and any ideas that you may wish her to incorporate into a bespoke piece of jewellery. She works with sterling silver and semi-precious gemstones where appropriate.

She will draw a design for your review before handcrafting the piece. If there is a gemstone involved, She will get a selection for you to choose from. A second visit, or a zoom call is sometimes required to discuss finer details.



Denbies Hotel, The White Horse Hotel, Burford Bridge Hotel



Denbies Hotel, The White Horse Hotel, Burford Bridge Hotel



Jewellery



Dorking



6.1.5 Winning with words

stevemarkwell11@gmail.com

Tel: 07900 588700

Using the power of words and storytelling to create your personal brand story.

Corporate options: -

We offer a fascinating experience exploring Surrey Hills Storytelling. Featuring:-

- The recounting of four or five stories based on local Surrey Hills Folk Tales. All stories feature Surrey Hills beauty spots - and all have a message about the preservation of the beauty of the Hills. All are written by a local storyteller, and illustrated by a local artist.

- a 90 minute session on "your own life story " - why it's important and how to construct it.

We could accommodate groups of up to 25 people at a local venue in the Albury or Guildford area.



Wotton House Hotel, Hurtwood Hotel Peaslake, Guildford Manor Hotel, The Harbour Hotel



Mandira's Kitchen, The Drummond Albury,



Guildford



7 Sustainable living

7.1.1 Puremess – make your own cleaning and beauty products

<https://www.puremess.co.uk/>

Tel: 07801 994460

Gold Trademark Surrey Hills winner 2021

PUREMESS artisan skincare has been created by **Gemma Cockrell**, a survivor of breast cancer, mum of three, and scientist making handmade, chemical-free, natural skin and hair care products, packaged using recyclable or biodegradable materials.

Corporate options: -

- Bath bomb making workshops,
- Sustainable skin care



Wotton House Hotel, Hurtwood Hotel Peaslake, Guildford Manor Hotel,



Duke of Wellington Pub



Skincare care products



Guildford



7.1.2 **Plant Passion – sustainable living at home**

<https://www.plantpassion.co.uk>

Tel: 07813 456 865

Claire and the team at Plant Passion sell beautiful British Flowers that are grown in East Clandon. Scented and ever changing with the seasons, her freshly cut flowers are made into bouquets and displays for presents and weddings.

Corporate options: -

Sustainable living at home – visit Claire’s stunning off the grid flower farm in Clandon to learn top tips and ideas to make your everyday life more sustainable



Wotton House Hotel, Hurtwood Hotel Peaslake, Guildford Manor Hotel,



Mandiras Kitchen, The Duke of Wellington, Michelin starred restaurant in Ripley - The Clockhouse



Locally grown flowers



Clandon, Nr Guildford



7.1.3 Bee Friends Ltd

<https://www.beefriends.org.uk>

Tel: 07713643261

Visit Bee Friends, the Bee Farm in Worplesdon, Guildford, where they look after and support millions of local native honeybees

Corporate options: -

(1). Visit their Bee farm and honey room to learn and experience the intricacies of bee hives and the lives of the bees including seeing the bees up close.

(2) Talks on honeybees - the challenging environment, where they live and the current threats they are facing

(3) Bee-demonstrations: at their bee farm or at suitable client's premises. Starting with a talk on the life of honeybees and their environment followed by a truly hands-on experience for those wishing to see our precious insects at work while inspecting a colony of very docile and calm honeybees. (Full-size bee suits and gloves will be provided)

They can host up to 50 participants at any one time. Bee-demonstrations are run in groups of 12 people to give everyone a fair chance for a close hand-on experience with the honeybees.



Guildford Manor Hotel, Worplesdon Place



Hot and cold refreshments and honey cakes on site. Worplesdon Place



Corporate gift baskets, Honey, bees wax, skin care range



Worplesdon, Nr Guildford



8 Places to stay, meet and eat

8.1 Accommodation with meeting space

8.1.1 The White Horse Hotel

www.whitehorsedorking.com

events@whitehorsedorking.com

Tel: 01306 881138

The White Horse Hotel, a traditional coaching inn dating back to 1278, offers the perfect place to meet and stay. Located in the heart of Dorking the hotel underwent a £4million renovation within the last 4 years and now boasts 56 luxury en-suite bedrooms, 3 meeting spaces from 2 to 50, The Dozen Restaurant and Bar, championing local produce and has on-site parking.

With complimentary Wifi throughout the hotel and private areas to meet and relax, the hotel guarantees you a warm welcome with a dedicated event team to look after your every need, and experienced in co-ordinating and liaising with all our member partners to ensure your event is a success



56 bedrooms



In house - The Dozen Restaurant and Bar



Yes



Vouchers



Meeting space for 2 to 50



Dorking



8.1.2 Denbies Vineyard Hotel

www.denbies.co.uk/denbies-vineyard-hotel
reception@denbiesvineyard.co.uk

Tel: 01306 876616

Denbies Vineyard Hotel is located in the heart of Denbies Wine Estate with outstanding views across the 265-acre estate and rolling hills. Offering 17 ensuite rooms with a new Vineyard Restaurant and bar area, the hotel has subtle references to its prime location in the Surrey Hills wine country.

The hotel was hailed as one of Britain's Top 100 Hotels by The Times,



17 bedrooms



In house, White Horse Hotel



Yes



Wine, Vouchers



Meeting space for 30 boardroom, 200 theatre and 2000 outdoors



Dorking



8.1.3 Barnett Hill Hotel

www.alexanderhotels.co.uk/barnett-hill

Tel: 01483 893361

This elegant Queen Anne-style mansion enjoys fabulous views across the Surrey Hills.

Set in 26 acres of lovingly maintained gardens and woodland, this four-star boutique hotel offers a range of airy meeting rooms, all with natural light, a selection of divine bedrooms and superb food & service.



58 bedrooms



In house, The Drummond in Albury



Yes



Meeting space for 70 theatre style, 32 boardroom



Vouchers



Wonersh



8.1.4 Wotton House Country Estate Hotel

<https://wottonhouse.co.uk>

Tel: 01306 730000

From corporate away days to residential conferences, Wotton House can cater for all. We can accommodate up to 140 delegates for both indoor and outdoor team building / activities.

Set in 13 acres of Surrey countryside with beautiful Grade II listed Italian gardens, Wotton House can accommodate up to 140 delegates for both indoor and outdoor team building / activities

They have a range of different menus from A La Carte, BBQ and conference dining menu just to name a few which can be served both outdoor and indoor in many of their spaces.

If you are looking for an offsite dinner they work closely with a range of other venues to accommodate a wide variety of options.

With 20 function spaces in all shapes and sizes they can accommodate all your meeting needs



127 bedrooms, 12 of which are twin rooms meaning they can accommodate up to 139 guests over night.



The 1877 Restaurant and bar (In house), The Drummond in Albury



Yes



Meeting space for 250



Vouchers



Wotton, Near Dorking



8.1.5 Mercure Box Hill Burford Bridge

www.all.accor.com/hotel/6635/index.en.shtml

Tel: 020 7660 0684

The 57 room Mercure Burford Bridge Hotel is ideally located at the foot of Box Hill in the heart of the Surrey Hills within three acres of landscaped gardens, just outside central Dorking.

The hotel also features eight meeting rooms that have been designed to cater for between four and 220 people including the sixteenth century Tithe Barn, perfect for weddings and celebrations (three are licenced), which is said to have been built from timbers taken from the Spanish Armada.

Between May and September guests and members of the local community are able to enjoy swimming in the hotel's heated Lido.



57 bedrooms



In house, Denbies Wine estate



Yes



Vouchers



8 meeting rooms with Meeting space for 4 up to 220



Dorking



8.1.6 Richard Onslow Inn

<https://www.therichardonslow.co.uk/>

Tel 01483 274922

A stalwart on Cranleigh's High Street, The Richard Onslow is a classic English village inn.

Featuring a friendly bar and snug, elegant dining room, secluded courtyard and ten characterful bedrooms. They serve fresh, quality, seasonal food every day (with a top-notch roast every Sunday), alongside well-kept ales on tap, carefully-chosen wines, gins and classic cocktails



10 bedrooms



In house



Meeting space for 14



Vouchers <https://peach-pubs.vouchercart.com/app/category/2727/the-richard-onslow-2727>



Cranleigh



8.1.7 The Merry Harriers

<https://merryharriers.com/>
enquiries@merryharriers.com

Tel 01428 682883

The Merry Harriers, a 16th century Inn located in picturesque Hambledon in the Surrey Hills Area of Outstanding Natural Beauty. A local Inn in feel, whilst being a destination to rest, stay and play with a host of Surrey activities and experiences on offer.

Enjoy dining in the cosy inn around an open fire, or in the warmer months, alfresco dining in the Inn's gardens. Private dining room available for group dining, along with exclusive use of the Shepherds hut field for group bookings. Group experiences such as llama trekking, cycling the Surrey Hills, and local gin and wine tours and tastings.

Family & Dog Friendly.



15 bedrooms including delightful shepherds' huts



In house



Vouchers



Hambledon



8.1.8 Surrey Outdoor Learning Centre

<https://www.surreyoutdoorlearning.uk/facilities/high-ashurst>

Email address: [corporate enquiry page](#)

Tel 01372 378901

Surrey Outdoor Learning & Development (SOLD) work with professional teams to achieve real personal development and positive behavioural change through challenges set in the outdoors.

They offer bespoke corporate development programmes that deliver a real return on investment.

Their outdoor education centres provide a unique alternative to conventional meeting space with the surrounding natural environment offering an idyllic and tranquil setting



In house



Vouchers



Yes



Meeting space for up to 120 pax indoors



High Ashurst, Nr Dorking, Henley Fort Nr Guildford, Angel Blue Canal Boat at Dapdune Wharf in Guildford and Thames Young Mariners

8.2 Accommodation – self catering

8.2.1 **Broadway Barn B&B**

<http://www.broadwaybarn.com/>

Tel 01483 223200

The only 5-Star Gold rated B&B in Surrey plus they have a Special Breakfast Accolade from the English Tourist Board.

An elegant home from home – this beautiful property, which is over 200 years old, offers the very best accommodation with modern comforts while retaining a sense of charm and character.

Each room is equipped with Egyptian cotton bedding, colour TV, DAB/FM radio alarm and free Wi-Fi.



5 bedrooms



The Anchor, The Clock house Ripley



Ripley

8.2.2 Great Tangley Manor

<https://www.greattangleymanor.co.uk/your-stay/corporate-retreat/>

Tel: 020 7526 4852

A Grade 1 listed property that has been a dwelling for over 1000 years.

Great Tangley Manor is a truly historic venue in Surrey with luxurious group accommodation, perfect for a corporate retreat

The Manor is a large private residence which sleeps up to 12 guests in five bedrooms.

- Board Meetings
- Team building days
- Training events
- Business meetings
- Client Entertainment
- Conference facilities



Sleeps 12



The Drummond, Albury



Meeting space for up to 15



Vouchers



Shalford



8.2.3 Gate Street

www.gatestreet.co.uk/

Tel: 01483 894 362

Set in the heart of the Surrey Hills, Gate Street is a family-run, regenerative farm passionate about restoring soil health and rearing livestock sustainably.

Experience traditional country living with superb meeting facilities as well as luxurious accommodation. Located just steps away from the heart of the venue.

Choose from the traditional Barn, which seats up to 150 or for smaller groups, The Old Dairy; a compact light space with a log burner for the winter months and a private outdoor courtyard for warmer months.

Pristine grounds provide numerous opportunities for outdoor activities, social team-building exercises such as archery and clay pigeon shooting and there are some beautiful walks to be experienced via The Greensand Way, which runs through the farm.

Make the most of their rural setting alongside our venue facilities, fully-equipped kitchen, bar and onsite accommodation.

Connect to nature and host a wellness workshop or retreat-weekend to re-emerge refreshed and energised.



Sleeps 24



Yes



Meeting space for up to 150



Richard Onslow, Cranleigh



Bramley, Guildford



8.2.4 Waggoners Wild Camping, Hampton Estate

<https://www.hamptonestate.co.uk/stay-at-hampton-estate/>

Tel: 01483 810465

Family run site set in a large field fringed by woodland with stunning views over the Surrey Hills and direct links to the North Downs Way and Surrey Cycleway trails.

The perfect spot for families and couples looking for a big boost from nature deep in the Surrey countryside.

The staff here make an extra effort to create a friendly camping experience, with an emphasis on space, seclusion and escapism. This environmentally conscious spot also tries to minimise its impact on the planet, with green solutions like hand-made compostable loos and cold wild woodland showers.



Farnham



8.2.5 Holly Cottage, Coverwood Lakes Self Catering

<https://www.surreyhillsholidaycottages.com/>

Tel: 01483 801092

Holly Cottage, which sleeps up to 6 people, is in the most peaceful, stunning location and would provide the perfect base from which to explore the Surrey Hills.

It has been comprehensively extended and renovated (with underfloor heating, bi-fold doors and log burner) to provide a high-quality contemporary living environment coupled with traditional country cottage features



Sleeps 6



The Hurtwood Hotel, Peaslake



Vouchers



Peaslake, Cranleigh



8.3 Non-residential meeting space

8.3.1 Loseley Park

<https://www.loseleypark.co.uk/>

Tel: 01483 405112

Steeped in a history stretching back over more than 500 years, privately owned Loseley Park is tailor-made to make your event unique

The outstanding range of facilities at Loseley Park mean they can cater for intimate gatherings to major events open to the public. Each venue can change subtly in character to reflect the nature of that event – yet all share the indefinable magic that Loseley brings.

The Tithe Barn that once stored tithes – tax in the form of grain paid by medieval farmers – now forms a spectacular and spacious venue for meetings and receptions of all kinds.

Ancient oak beams, the marks of the original carpenters still visible, make this a particularly intimate venue, yet one that can accommodate 140 guests.

- Corporate seminars, meetings, lunches, dinners, parties
- Family fun days
- Team building and activity days
- Off-road driving
- Public events



Barnett Hill Hotel



Meeting space for up to 140



Richard Onslow, Cranleigh



Guildford



8.3.2 Gildings Barns

<https://www.gildingsbarns.co.uk/team-building-corporate>
hello@gildingsbarnsevents.com

Tel: 07548 473672

The award-winning Gildings Barns has a unique and rustic character that creates a lasting impression to provide privacy and exclusivity - comfortable, relaxed and completely out the way of the everyday hustle and bustle.

The Original Threshing Barn is over 300 years and consists of several interconnecting oak-framed beamed barns. With over 20 acres of private grounds there is excellent opportunity and space for outdoor activities and team challenges.



- Award & Gala Dinners
- Company Parties & Team Days
- Full & Half Day Meetings
- Product Launches
- Public Speaker Events
- Team Building
- Training



Denbies Hotel, The White Horse Hotel, Burford Bridge Hotel



Meeting space for up to 130



Gildings Barns Catering Partners can provide a wide variety of catering choices and menus



Dorking



8.3.3 Fetcham Park

<https://fetchampark.co.uk/meetings-and-events.html>

Tel 01372 371 000

A Grade II listed house, full of character and history. Unique serviced offices, meeting and event rooms in Leatherhead, Surrey, where modern businesses get the flexibility they need to thrive.

Fetcham Park is tucked away from the distractions and noise of the city, yet situated close to the M25/A3 and less than an hour from London, Heathrow and Gatwick airports.

Their tranquil meeting rooms with intelligent video conferencing and flexible office space are fully equipped for modern business with superfast gigabit WiFi and the latest VoIP Cloud telephony systems that keep you connected.



Beaverbrook Hotel, Broadway Barn-Ripley, The White Horse – Dorking,



Meeting space from 2 up to 60 theatre style & up to 14 at one table, or 60 cabaret style



In house catering available



Leatherhead



8.3.4 Hampton Estate

<https://www.hamptonestate.co.uk/myrtles-courtyard/>

enquiries@hamptonestate.co.uk

Tel: 01483 810465

Myrtle's Courtyard at Hampton is a very pretty cluster of early Victorian farm buildings nestling in the historic parkland of the Estate and is available to hire for all sorts of events.

Myrtle's Courtyard was originally the Hampton Dairy Farm and milking parlour.

The space is very adaptable, and will suit meetings, conferences, dinners, parties, barn dances, lunches, teas, meetings, lectures and training.



Hogs Back Hotel



Meeting space for up to 100



Yes



Catering options available



Farnham



8.3.5 West Horsley Place Trust

www.westhorsleyplace.org

info@westhorsleyplace.org

Tel: 01483 282032

A Grade I listed medieval manor house and estate of great beauty and historic significance. Cared for by The Trust, the romantic fragility of West Horsley Place provides a stunning setting for weddings, celebrations and events.

Place Farm Barn, an 18th century timber and brick barn, newly renovated to provide a contemporary interior space. A stone's throw away from the main house, there is a large entrance foyer that leads into the main entertainment/meeting space. From here, huge glass doors open out to a walled courtyard, large enough for a marquee if required, overlooking fields and parkland. Seats a maximum of 150.



Denbies Hotel, The White Horse Hotel, Burford Bridge Hotel



Meeting space for up to 150



Yes



The Duke of Wellington, East Horsley



West Horsley



8.3.6 The Smokery, Albury Estate Fisheries

www.thesmokeryalbury.com

kate.melhuish@alburyestatefisheries.co.uk

01483 202323

A private-hire venue with unique character and charm - The Smokery has everything you could need if you're hosting clients, training staff or having a team away-day.

Situated on Albury Estate's Weston Fishing Lakes, The Smokery showcases stunning panoramic lakeside views. Whether you are planning a small family celebration or a larger event, The Smokery offers a beautifully unique and adaptable space.

They offer bespoke packages, which can include a morning's private fly-fishing tuition followed by a fine dining culinary experience with one of our excellent recommended caterers.



The Drummond, Albury



Meeting space for up to 35



Yes



The Drummond, Albury



Albury

8.3.7 Clandon Wood Nature Reserve and Natural Burial Ground

<https://clandonwood.com>

simonferrar@nbuk.org

01483 479614

Thirty-one acres of traditional wildflower meadowland, lakes, wetland and young woodland with an elegant contemporary glass pavilion available for meetings during Spring & Summer.

- Full audio visual facilities with the availability of live - stream via Youtube.
- Full comfort facilities including disabled and baby-change.
- Buggy available for those that need assistance with mobility.
Free on-site car parking. On local bus routes.
- 15 minute walk to Clandon Station (London/Guildford line)



Options include:-

- volunteering days in land management
- tree planting
- Nature Walks and Talks



The Bulls Head, West Clandon – The Onslow Arms, West Clandon and the Queens Head, East Clandon.



Wotton House Hotel, Hurtwood Hotel, Peaslake, Guildford Manor Hotel,



Yes



Meeting space for 90 theatre style



Clandon

8.4 Pubs and restaurants

8.4.1 Duke of Wellington

<https://www.dukeofwellingtoneasthorsley.co.uk/>

Tel 01483 282 312

The Duke of Wellington in East Horsley is an ancient country pub in Surrey with a striking appearance thanks to Lord Lovelace's Victorian passion for decorative brickwork.

It sits at the top of Ockham Road South by the green – ready to entertain friends and strangers alike with warm hospitality.



In house



Denbies Hotel, The White Horse Hotel, Burford Bridge Hotel



Yes



Vouchers <https://peach-pubs.vouchercart.com/app/category/2725/the-duke-of-wellington-2725>



Meeting space for – no private dining area but guests are welcome to use the pub as an alternative to working from home. With great coffee!



East Horsley



8.4.2 The Drummond

<https://www.thedrummondalbury.co.uk/>

Tel 01483 202039

The Drummond at Albury is a classic English village inn in the Surrey Hills.

Featuring a friendly bar and elegant dining room, pretty pub garden by the stream and characterful bedrooms.

They serve fresh, quality, seasonal food every day (with a top-notch roast every Sunday), alongside well-kept ales on tap, carefully-chosen wines, gins and classic cocktails.

Their ethically-sourced coffee is pretty good stuff too.



In house



Meeting space for 20



Yes



Vouchers <https://peach-pubs.vouchercart.com/app/category/129328>



Albury



8.4.3 Richard Onslow Inn

<https://www.therichardonslow.co.uk/>

Tel 01483 274922

A stalwart on Cranleigh's High Street, The Richard Onslow is a classic English village inn.

Featuring a friendly bar and snug, elegant dining room, secluded courtyard and ten characterful bedrooms. They serve fresh, quality, seasonal food every day (with a top-notch roast every Sunday), alongside well-kept ales on tap, carefully-chosen wines, gins and classic cocktails



10 bedrooms



In house



Yes



Meeting space for 14



Vouchers <https://peach-pubs.vouchercart.com/app/category/2727/the-richard-onslow-2727>



Cranleigh



8.4.4 The Merry Harriers

<https://merryharriers.com/>
enquiries@merryharriers.com

Tel 01428 682883

The Merry Harriers, a 16th century Inn located in picturesque Hambledon in the Surrey Hills Area of Outstanding Natural Beauty. A local Inn in feel, whilst being a destination to rest, stay and play with a host of Surrey activities and experiences on offer.

Enjoy dining in the cosy inn around an open fire, or in the warmer months, alfresco dining in the Inn's gardens. Family & Dog friendly, we are proudly award-winning in both areas and cater for this with Children's Menu's and Doggy Meal Specials and children's outdoor play area.



15 bedrooms including delightful shepherds' huts



In house



Vouchers



Cranleigh

9 Catering

9.1.1 **Lavender Catering**

<https://www.lavendercatering.co.uk>

feedme@lavendercatering.co.uk

Tel: 01372 800626 / 07836358333

Lavenders prep kitchen is nestled in the lovely village Bookham within the Surrey Hills. Their pledge is to source and feed you within a 25-mile radius of our kitchen so most of their food comes directly from the fields, bakeries, and farms within the Surrey Hills.

They cater for all kinds of events, celebrations, Team building, Corporate Entertaining and special occasions.

Specialising in bespoke and innovative menus, we have been feeding people and providing catering services for events across the Surrey Hills, London and the Home Counties since 2007.

From corporate and fundraising events to birthday and anniversary parties of any size, we work with a diverse selection of clients curating tailored menus that are packed-full of flavour and beautifully presented.

We are renowned for adding creative flair – whether you need an outdoor catering company for a London celebration, a Surrey caterer to provide canapes and cocktails for a product launch, or a private event caterer to cook for an intimate dinner, we can help.



Denbies hotel, The White Horse Hotel, Burford Bridge Hotel, De Vere Horsley Estate



Duke of Wellington pub, Queens Gambit Pub, The plough Pub, Denbies, Burford Bridge Hotel



Option for corporate gifting



Great Bookham, Leatherhead

10 Community projects

10.1.1 **Become a Surrey Hills Corporate Champion**

Surrey Hills Enterprises

wendy@surreyhillsenterprises.co.uk

Tel: 07884 000188

By becoming a Surrey Hills Corporate Champion, you will be supporting the Surrey Hills, increasing sustainability, supporting local businesses and artisans and contributing to nature recovery whilst offering fun and special gifts and experiences for Staff and Customers.

The benefits of becoming a Surrey Hills Corporate Champions are:

- Having access to distinctive gifts and experiences for your staff and clients that reflect and support the natural environment;
- Increase staff well-being through a range of outdoor activities linked to the local area;
- Staff involvement in nature recovery projects;
- High quality rewards and incentives focusing on local provenance, quality and sustainability.

10.1.2 **Corporate Champion tree planting day**

Surrey Hills Enterprises

wendy@surreyhillsenterprises.co.uk

Tel: 07884 000188

Help offset your carbon emissions whilst having a great day out with your team in the stunning Surrey Hills – locations throughout the Surrey Hills

Corporate options: -

Tree planting day with delicious food and drink from the Surrey Hills



10.1.3 **Wey & Arun - corporate conservation day**

<https://weyarun.org.uk/>

support@weyandarun.co.uk

Tel: 01403 752403

Charity restoring the Wey & Arun Canal - London's lost route to sea

Corporate options: -

- Corporate conservation day helping clear and restore the canal walkways



Barnett Hill Hotel



Grantley Arms - Wonersh



Bramley



Membership vouchers



10.1.4 Clandon Wood Nature Reserve and Natural Burial Ground

<https://clandonwood.com>

simonferrar@nbuk.org

01483 479614

Thirty-one acres of traditional wildflower meadowland, lakes, wetland and young woodland with an elegant contemporary glass pavilion available for meetings during Spring & Summer.

- Full audio visual facilities with the availability of live - stream via Youtube.
- Full comfort facilities including disabled and baby-change.
- Buggy available for those that need assistance with mobility.
- Free on-site car parking. On local bus routes.
- 15 minute walk to Clandon Station (London/Guildford line)

Options include:-

- volunteering days in land management



<https://www.surreyhill.org/local-businesses/category/corporate-activities/>

- tree planting
- Nature Walks and Talks



The Bulls Head, West Clandon – The Onslow Arms, West Clandon and the Queens Head, East Clandon.



Guildford Manor Hotel, Wotton House Hotel, Hurtwood Hotel, Peaslake



Meeting space for 90 theatre style



Clandon